

## Chr-A Polyclonal Antibody

Catalog No: #44218

Package Size: #44218-1 50ul #44218-2 100ul

Orders: [order@signalwayantibody.com](mailto:order@signalwayantibody.com)Support: [tech@signalwayantibody.com](mailto:tech@signalwayantibody.com)

## Description

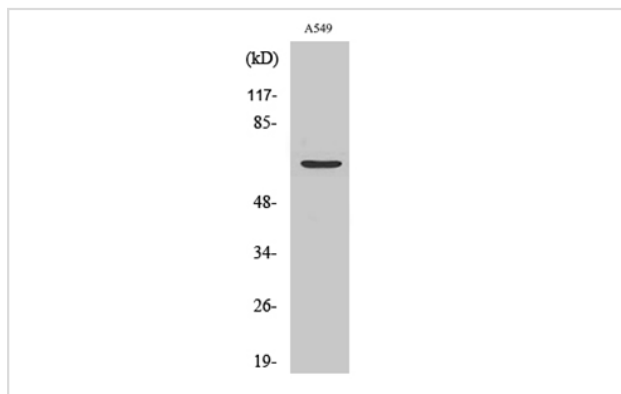
Product Name	Chr-A Polyclonal Antibody
Host Species	Rabbit
Clonality	Polyclonal
Isotype	IgG
Purification	The antibody was affinity-purified from rabbit antiserum by affinity-chromatography using epitope-specific immunogen.
Applications	WB;IHC-p;IF;ELISA
Species Reactivity	Human; Mouse; Rat
Specificity	Chr-A Polyclonal Antibody detects endogenous levels of Chr-A protein.
Immunogen Description	The antiserum was produced against synthesized peptide derived from human Chr-A.
Accession No.	Swiss Prot:P10645GeneID:1113
Calculated MW	68kD
Concentration	1 mg/ml
Formulation	Liquid in PBS containing 50% glycerol, 0.5% BSA and 0.02% sodium azide.
Storage	Store at -20°C/1 year

## Application Details

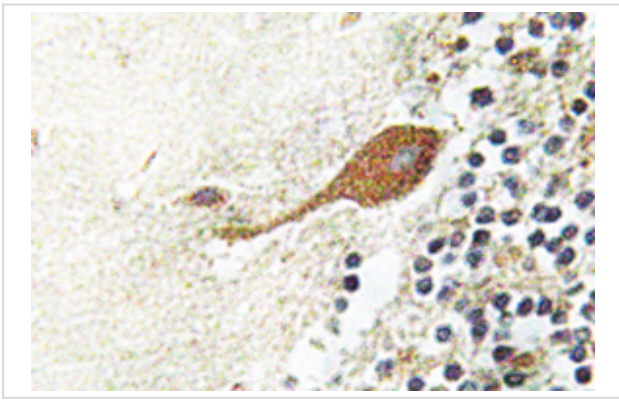
Western Blot: 1/500 - 1/2000

Immunohistochemistry: 1/100 - 1/300

## Images



Western Blot analysis of various cells using Chr-A Polyclonal Antibody



Immunohistochemistry analysis of Chr-A antibody in paraffin-embedded human brain tissue.

---

Note: This product is for in vitro research use only