

## LAT (Phospho-Tyr220) Rabbit mAb

Catalog No: #14128

Package Size: #14128-1 50ul #14128-2 100ul

Orders: order@signalwayantibody.com

Support: tech@signalwayantibody.com

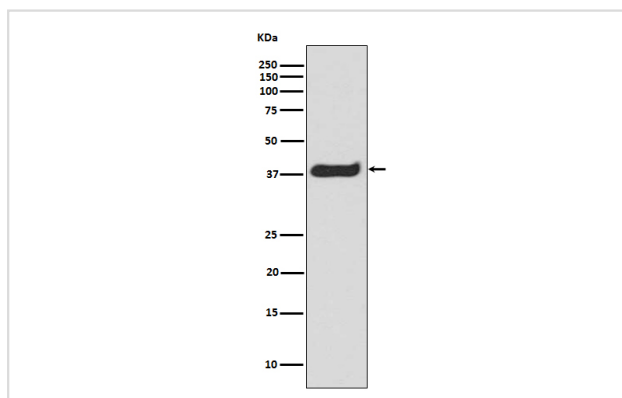
## Description

Product Name	LAT (Phospho-Tyr220) Rabbit mAb
Host Species	Rabbit
Clonality	Monoclonal
Isotype	Rabbit IgG
Purification	Affinity-chromatography
Applications	WB IHC ICC/IF IP
Species Reactivity	Human Mouse Rat
Specificity	Phospho-LAT LAT (Y220) Antibody detects endogenous levels of total Phospho-LAT (Y220)
Immunogen Description	A synthesized peptide derived from human Phospho-LAT (Y220)
Other Names	36 kDa phospho-tyrosine adaptor protein; LAT1; lat; pp36
Accession No.	Uniprot:O43561
Uniprot	O43561
Calculated MW	38kDa
Formulation	Rabbit IgG in phosphate buffered saline , pH 7.4, 150mM NaCl, 0.02% sodium azide and 50% glycerol.
Storage	Store at +4 $\Lambda$ C short term. Store at -20 $\Lambda$ C long term. Avoid freeze / thaw cycle.

## Application Details

WB:1:500~1:2000IHC:1:50~1:200ICC/IF:1:50~1:200IP:1:30

## Images



Western blot analysis of Phospho-LAT (Y220) in Jurkat cell treated with CD3 lysate.

## Product Description

Required for TCR (T-cell antigen receptor)- and pre-TCR-mediated signaling, both in mature T-cells and during their development. Involved in FCGR3 (low affinity immunoglobulin gamma Fc region receptor III)-mediated signaling in natural killer cells and FCER1 (high affinity immunoglobulin epsilon receptor)-mediated signaling in mast cells. Couples activation of these receptors and their associated kinases with distal intracellular events such as mobilization of intracellular calcium stores, PKC activation, MAPK activation or cytoskeletal reorganization through the recruitment of PLCG1, GRB2,

GRAP2, and other signaling molecules.

---

Note: This product is for in vitro research use only