

PP2A alpha (Phospho-Tyr307) Rabbit mAb

Catalog No: #14129

Package Size: #14129-1 50ul #14129-2 100ul

Orders: order@signalwayantibody.com

Support: tech@signalwayantibody.com

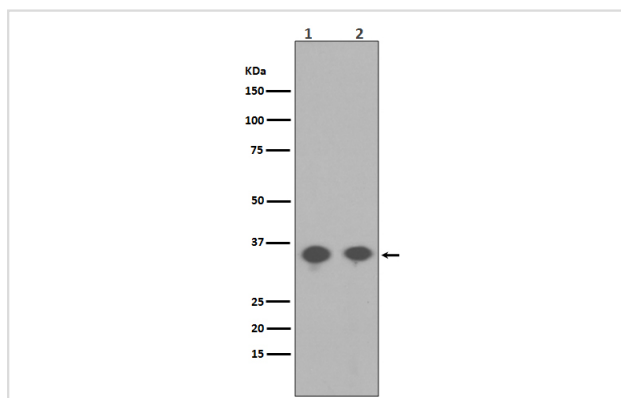
Description

Product Name	PP2A alpha (Phospho-Tyr307) Rabbit mAb
Host Species	Rabbit
Clonality	Monoclonal
Isotype	Rabbit IgG
Purification	Affinity-chromatography
Applications	WB IHC ICC/IF IP
Species Reactivity	Human Mouse Rat
Specificity	Phospho-PP2A alpha (Y307) Antibody detects endogenous levels of total Phospho-PP2A alpha (Y307)
Immunogen Description	A synthesized peptide derived from human Phospho-PP2A alpha (Y307)
Other Names	eplication protein C; PP2A-alpha; Replication protein C; RP-C; PPP2CA; MGC786
Accession No.	Uniprot:P67775
Uniprot	P67775
Calculated MW	35kDa
Formulation	Rabbit IgG in phosphate buffered saline , pH 7.4, 150mM NaCl, 0.02% sodium azide and 50% glycerol.
Storage	Store at +4 Λ C short term. Store at -20 Λ C long term. Avoid freeze / thaw cycle.

Application Details

WB:1:500~1:2000IHC:1:50~1:200ICC/IF:1:50~1:200IP:1:50

Images



Western blot analysis of Phospho-PP2A alpha (Y307) in (1) Rat kidney lysate; (2) A431 cell lysate treated with EGF.

Product Description

PP2A is the major phosphatase for microtubule-associated proteins (MAPs). PP2A can modulate the activity of phosphorylase B kinase casein kinase 2, mitogen-stimulated S6 kinase, and MAP-2 kinase. Cooperates with SGOL2 to protect centromeric cohesin from separase-mediated cleavage in oocytes specifically during meiosis I (By similarity). Can dephosphorylate SV40 large T antigen and p53/TP53. Activates RAF1 by dephosphorylating it at 'Ser-259'.

Note: This product is for in vitro research use only