

Smad3 (Phospho-Ser423/Ser425) Rabbit mAb

Catalog No: #14138



Package Size: #14138-1 50ul #14138-2 100ul

Orders: order@signalwayantibody.com
Support: tech@signalwayantibody.com

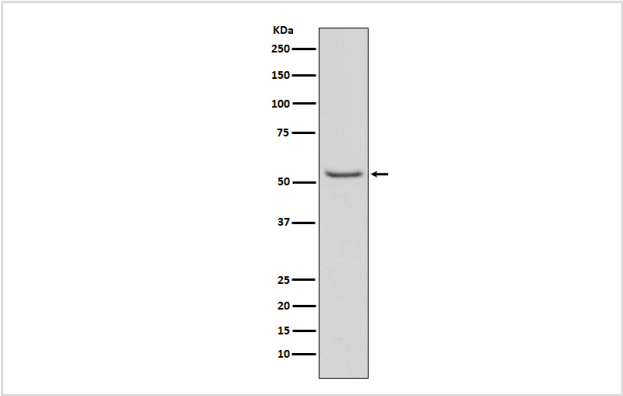
Description

| | |
|-----------------------|--|
| Product Name | Smad3 (Phospho-Ser423/Ser425) Rabbit mAb |
| Host Species | Rabbit |
| Clonality | Monoclonal |
| Isotype | Rabbit IgG |
| Purification | Affinity-chromatography |
| Applications | WB IHC ICC/IF |
| Species Reactivity | Human Mouse |
| Specificity | Phospho-Smad3 (S423 + S425) Antibody detects endogenous levels of total Phospho-Smad3 (S423 + S425) |
| Immunogen Description | A synthesized peptide derived from human Phospho-Smad3 (S423 + S425) |
| Other Names | JV15-2, MAD-3, MADH3, Mad3, Mothers against DPP homolog 3, Mothers against decapentaplegic homolog 3, SMAD 3, Smad 3 |
| Accession No. | Uniprot:P84022 |
| Uniprot | P84022 |
| Calculated MW | 55kDa |
| Formulation | Rabbit IgG in phosphate buffered saline , pH 7.4, 150mM NaCl, 0.02% sodium azide and 50% glycerol. |
| Storage | Store at +4Λ C short term. Store at -20Λ C long term. Avoid freeze / thaw cycle. |

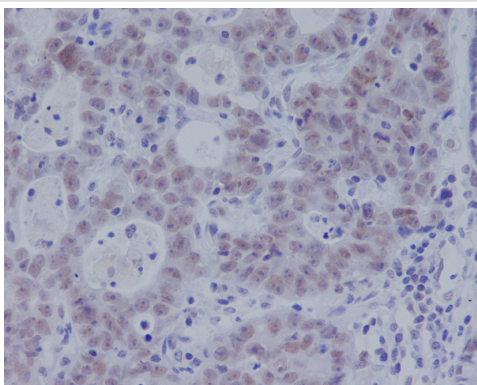
Application Details

WB:1:500~1:2000IHC:1:50~1:200ICC/IF:1:50~1:200

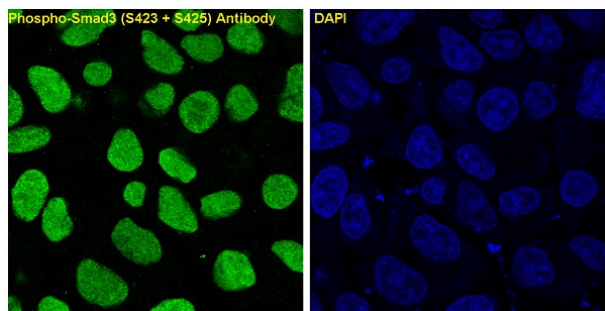
Images



Western blot analysis of Phospho-Smad3 (S423/S425) expression in A549 cell lysate treated with TGF-β1.



Immunohistochemical analysis of paraffin-embedded human gastric adenocarcinoma, using Phospho-Smad3 (S423 + S425) Antibody.



Immunofluorescent analysis of A549 cells treated with TGF- β , using Phospho-Smad3 (S423 + S425) Antibody.

Product Description

Receptor-regulated SMAD (R-SMAD) that is an intracellular signal transducer and transcriptional modulator activated by TGF- β (transforming growth factor) and activin type 1 receptor kinases. Binds the TRE element in the promoter region of many genes that are regulated by TGF- β and, on formation of the SMAD3/SMAD4 complex, activates transcription.

Note: This product is for in vitro research use only