

alpha Synuclein (Phospho-Ser129) Rabbit mAb

Catalog No: #14141

Package Size: #14141-1 50ul #14141-2 100ul

Orders: order@signalwayantibody.com

Support: tech@signalwayantibody.com

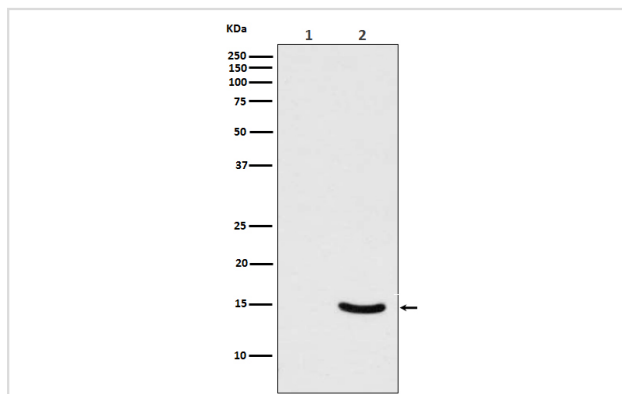
Description

Product Name	alpha Synuclein (Phospho-Ser129) Rabbit mAb
Host Species	Rabbit
Clonality	Monoclonal
Isotype	Rabbit IgG
Purification	Affinity-chromatography
Applications	WB IHC ICC/IF
Species Reactivity	Human
Specificity	Phospho-alpha Synuclein (S129) Antibody detects endogenous levels of total Phospho-alpha Synuclein (S129)
Immunogen Description	A synthesized peptide derived from human Phospho-alpha Synuclein (S129)
Other Names	Alpha-synuclein; NACP; non A-beta component of AD amyloid; PARK1; PARK4; PD1; SNCA;
Accession No.	Uniprot:P37840
Uniprot	P37840
Calculated MW	18kDa
Formulation	Rabbit IgG in phosphate buffered saline , pH 7.4, 150mM NaCl, 0.02% sodium azide and 50% glycerol.
Storage	Store at +4 Λ C short term. Store at -20 Λ C long term. Avoid freeze / thaw cycle.

Application Details

WB:1:500~1:2000IHC:1:50~1:200ICC/IF:1:50~1:200

Images



Western blot analysis of Phospho-alpha Synuclein (Ser129) expression in (1) 293T cell lysate; (2) 293T cell lysate transfected with Polo-Like Kinase 2 and alpha Synuclein.

Product Description

SNCA a member of the synuclein family. Abundantly expressed in the brain. Inhibits phospholipase D2 selectively. May integrate presynaptic signaling and membrane trafficking. Implicated in the pathogenesis of Parkinson's disease. A major component of amyloid plaques in the brains of patients with Alzheimer's disease. Two alternatively spliced isoforms transcripts have been identified.

Note: This product is for in vitro research use only