

alpha Tubulin (Phospho-Tyr272) Rabbit mAb

Catalog No: #14143

Package Size: #14143-1 50ul #14143-2 100ul

Orders: order@signalwayantibody.com

Support: tech@signalwayantibody.com

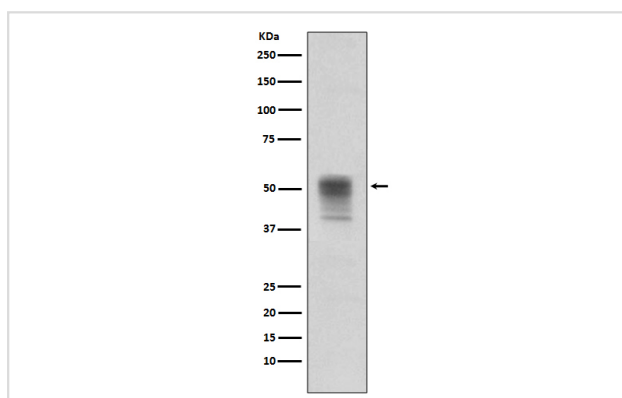
Description

| | |
|-----------------------|---|
| Product Name | alpha Tubulin (Phospho-Tyr272) Rabbit mAb |
| Host Species | Rabbit |
| Clonality | Monoclonal |
| Isotype | Rabbit IgG |
| Purification | Affinity-chromatography |
| Applications | WB ICC/IF |
| Species Reactivity | Human |
| Specificity | Phospho-alpha Tubulin (Y272) Antibody detects endogenous levels of total Phospho-alpha Tubulin (Y272) |
| Immunogen Description | A synthesized peptide derived from human Phospho-alpha Tubulin (Y272) |
| Other Names | Alpha-tubulin 3; B-ALPHA-1; FLJ25113; hum-a-tub1; hum-a-tub2; LIS3; TBA1A; TUBA1A; TUBA3; Tubulin alpha-1A chain; Tubulin alpha-3 chain; Tubulin B-alpha-1; tubulin, alpha 1a; tubulin, alpha 3; tubulin, alpha, brain-specific |
| Accession No. | Uniprot:P68363 |
| Uniprot | P68363 |
| Calculated MW | 54kDa |
| Formulation | Rabbit IgG in phosphate buffered saline , pH 7.4, 150mM NaCl, 0.02% sodium azide and 50% glycerol. |
| Storage | Store at +4Λ C short term. Store at -20Λ C long term. Avoid freeze / thaw cycle. |

Application Details

WB:1:500~1:2000 ICC/IF:1:50~1:200

Images



Western blot analysis on Jurkat cell lysates treated with pervanadate using alpha Tubulin (phospho Y272) Antibody.

Product Description

TUBA1A Tubulin is the major constituent of microtubules. It binds two moles of GTP, one at an exchangeable site on the beta chain and one at a non-exchangeable site on the alpha-chain.

Note: This product is for in vitro research use only