

## p95/NBS1 (Phospho-Ser343) Rabbit mAb

Catalog No: #14146

Package Size: #14146-1 50ul #14146-2 100ul

Orders: order@signalwayantibody.com

Support: tech@signalwayantibody.com

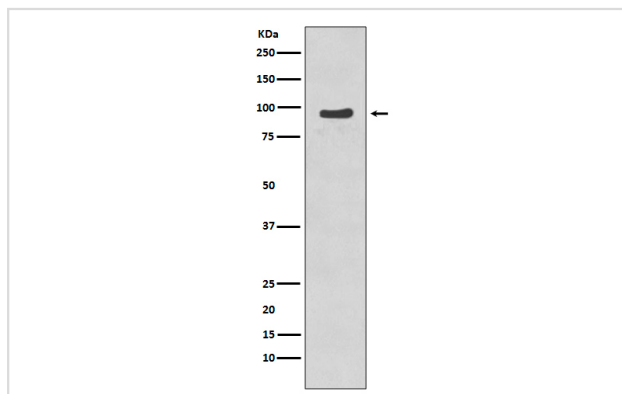
## Description

Product Name	p95/NBS1 (Phospho-Ser343) Rabbit mAb
Host Species	Rabbit
Clonality	Monoclonal
Isotype	Rabbit IgG
Purification	Affinity-chromatography
Applications	WB ICC/IF IP
Species Reactivity	Human
Specificity	Phospho-p95/NBS1 (S343) Antibody detects endogenous levels of total Phospho-p95/NBS1 (S343)
Immunogen Description	A synthesized peptide derived from human Phospho-p95/NBS1 (S343)
Other Names	Cell cycle regulatory protein P95, NBN, NBS, NIBRIN, NIJMEGEN BREAKAGE syndrome protein 1, p95-NBS1
Accession No.	Uniprot:O60934
Uniprot	O60934
Calculated MW	95kDa
Formulation	Rabbit IgG in phosphate buffered saline , pH 7.4, 150mM NaCl, 0.02% sodium azide and 50% glycerol.
Storage	Store at +4 $\Lambda$ C short term. Store at -20 $\Lambda$ C long term. Avoid freeze / thaw cycle.

## Application Details

WB:1:500~1:2000 ICC/IF:1:50~1:200 IP:1:50

## Images



Western blot analysis of p95/NBS1 phosphorylation expression in Jurkat cell lysate treated with Etoposide.

## Product Description

NBS1 is a member of the MRE11/RAD50 double-strand break repair complex. Involved in DNA double-strand break repair and DNA damage-induced checkpoint activation. Mutation results in the Nijmegen breakage syndrome (NBS), an autosomal recessive chromosomal instability syndrome.

---

Note: This product is for in vitro research use only