

Retinoblastoma (Phospho-Ser780) Rabbit mAb

Catalog No: #14147

Package Size: #14147-1 50ul #14147-2 100ul

Orders: order@signalwayantibody.com

Support: tech@signalwayantibody.com

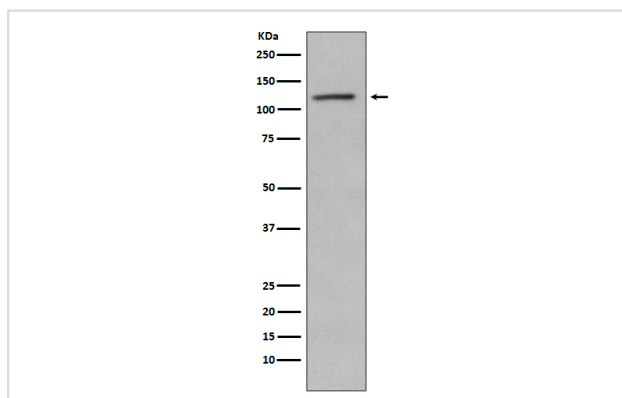
Description

Product Name	Retinoblastoma (Phospho-Ser780) Rabbit mAb
Host Species	Rabbit
Clonality	Monoclonal
Isotype	Rabbit IgG
Purification	Affinity-chromatography
Applications	WB IHC
Species Reactivity	Human
Specificity	Retinoblastoma Antibody detects endogenous levels of total Retinoblastoma
Immunogen Description	A synthesized peptide derived from human Retinoblastoma
Other Names	OSRC; RB; p105-Rb; pRb; RB1; pp110; Retinoblastoma 1; PPP1R130
Accession No.	Uniprot:P06400
Uniprot	P06400
Calculated MW	110kDa
Formulation	Rabbit IgG in phosphate buffered saline , pH 7.4, 150mM NaCl, 0.02% sodium azide and 50% glycerol.
Storage	Store at +4 Λ C short term. Store at -20 Λ C long term. Avoid freeze / thaw cycle.

Application Details

WB:1:500~1:2000IHC:1:50~1:200

Images



Western blot analysis of Retinoblastoma phosphorylation expression in Jurkat cell lysate treated with Alkaline Phosphatase.

Product Description

Cell cycle-dependent phosphorylation by a CDK inhibits Rb target binding and allows cell cycle progression. Rb inactivation and subsequent cell cycle progression likely requires an initial phosphorylation by cyclin D-CDK4/6 followed by cyclin E-CDK2 phosphorylation. Specificity of different CDK/cyclin complexes has been observed in vitro and cyclin D1 is required for Ser780 phosphorylation in vivo.

Note: This product is for in vitro research use only