

S6K1 (Phospho-Thr421/Ser424) Rabbit mAb

Catalog No: #14148

Package Size: #14148-1 50ul #14148-2 100ul

Orders: order@signalwayantibody.com

Support: tech@signalwayantibody.com

Description

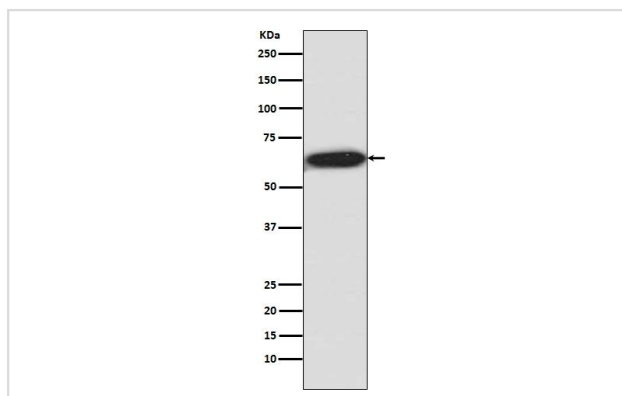
Product Name	S6K1 (Phospho-Thr421/Ser424) Rabbit mAb
Host Species	Rabbit
Clonality	Monoclonal
Clone No.	5A3
Isotype	Rabbit IgG
Purification	Affinity-chromatography
Applications	WB IP
Species Reactivity	Human Rat
Specificity	Phospho-S6K1 (T421 + S424) Antibody detects endogenous levels of total Phospho-S6K1 (T421 + S424)
Immunogen Description	A synthesized peptide derived from human Phospho-S6K1 (T421 + S424)
Target Name	S6K1
Other Names	EC 2.7.11.1, KS6B1, P70-S6K, RPS6KB1, Ribosomal protein S6 kinase, Ribosomal protein S6 kinase, 70kDa, polypeptide 1, S6K, kinase p70S6K, p70-S6K
Accession No.	Uniprot:P23443
Uniprot	P23443
Calculated MW	70kDa
Formulation	Rabbit IgG in phosphate buffered saline , pH 7.4, 150mM NaCl, 0.02% sodium azide and 50% glycerol.
Storage	Store at +4 Λ C short term. Store at -20 Λ C long term. Avoid freeze / thaw cycle.

Application Details

WB:1:500~1:2000

IP:1:30

Images



All Lanes: Phospho-S6K1 (T421 + S424) Antibody at 1/ 500 dilution.Lane1:HEK293 cell lysate.Proteins at 20ug per laneSecondary: Goat Anti-Rabbit IgG(HRP) at 1/20000 dilutionPredicted band size : 70kDaObserved band size: 70kDa

Product Description

This gene encodes a member of the RSK (ribosomal S6 kinase) family of serine/threonine kinases. This kinase contains 2 non-identical kinase catalytic domains and phosphorylates several residues of the S6 ribosomal protein.

Note: This product is for in vitro research use only