

HSF1 (Phospho-Ser326) Rabbit mAb

Catalog No: #14149

Package Size: #14149-1 50ul #14149-2 100ul

Orders: order@signalwayantibody.com

Support: tech@signalwayantibody.com

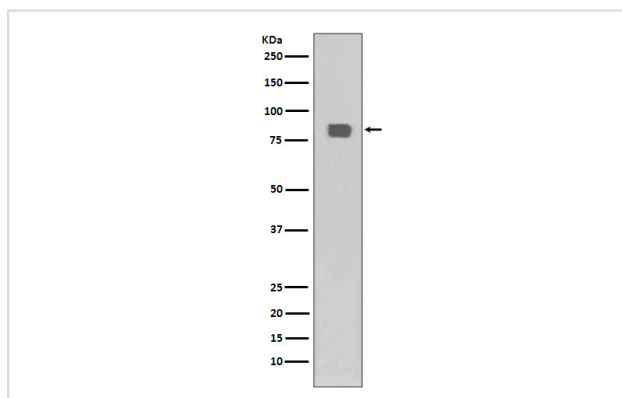
Description

Product Name	HSF1 (Phospho-Ser326) Rabbit mAb
Host Species	Rabbit
Clonality	Monoclonal
Isotype	Rabbit IgG
Purification	Affinity-chromatography
Applications	WB IHC ICC/IF IP FC
Species Reactivity	Human
Specificity	Phospho-HSF1 (S326) Antibody detects endogenous levels of total Phospho-HSF1 (S326)
Immunogen Description	A synthesized peptide derived from human Phospho-HSF1 (S326)
Other Names	HSF1; HSTF 1; HSTF1; Heat shock factor protein 1; Heat shock transcription factor 1;
Accession No.	Uniprot:Q00613
Uniprot	Q00613
Calculated MW	82kDa
Formulation	Rabbit IgG in phosphate buffered saline , pH 7.4, 150mM NaCl, 0.02% sodium azide and 50% glycerol.
Storage	Store at +4Λ C short term. Store at -20Λ C long term. Avoid freeze / thaw cycle.

Application Details

WB:1:500~1:2000IHC:1:50~1:200IP:1:50FC:1:50

Images



Western blot analysis of Phospho-HSF1 (S326) expression in HeLa cell lysates treated with heat.

Product Description

Heat shock transcription factors (HSF, also designated HSTF) 1 and 2 are involved in this regulation. HSF1 and HSF2 are upregulated by estrogen at both the mRNA and protein level. HSF1 is normally found as a monomer whose transcriptional activity is repressed by constitutive phosphorylation. Upon activation, HSF1 forms trimers, gains DNA binding activity and is translocated to the nucleus. HSF2 activity is associated with differentiation and development, and, like HSF1, binds DNA as a trimer. Both HSF1 and HSF2 are known to be induced by proteasome inhibitors of the ubiquitin

pathway.

Note: This product is for in vitro research use only