

PAK1/2/3 (Phospho-Ser144/Ser141/Ser139) Rabbit mAb

Catalog No: #14156

Orders: order@signalwayantibody.com

Package Size: #14156-1 50ul #14156-2 100ul

Support: tech@signalwayantibody.com

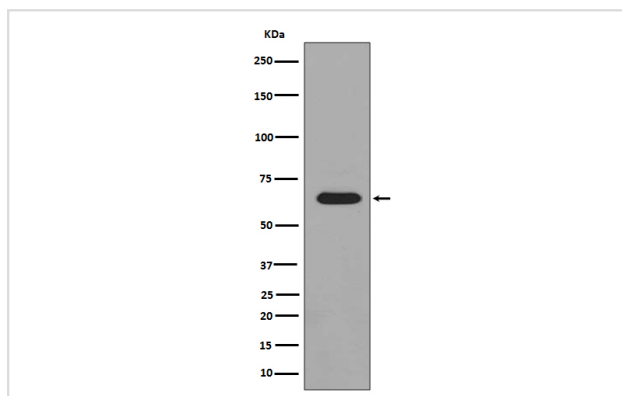
Description

Product Name	PAK1/2/3 (Phospho-Ser144/Ser141/Ser139) Rabbit mAb
Host Species	Rabbit
Clonality	Monoclonal
Isotype	Rabbit IgG
Purification	Affinity-chromatography
Applications	WB IHC ICC/IF IP FC
Species Reactivity	Human Mouse Rat
Specificity	Phospho-PAK1/2/3 (S144+S141+S139) Antibody detects endogenous levels of total Phospho-PAK1/2/3 (S144+S141+S139)
Immunogen Description	A synthesized peptide derived from human Phospho-PAK1/2/3 (S144+S141+S139)
Other Names	ADRB2; Alpha-PAK; CDC42/RAC effector kinase PAK-A; EC 2.7.11.1; P65-PAK; P68-PAK; PAK1 (phospho S144); PAK2 (phospho S141); PAK3 (phospho S139);
Accession No.	Uniprot:O75914/Q13153/Q13177
Uniprot	O75914/Q13153/Q13177
Calculated MW	65kDa
Formulation	Rabbit IgG in phosphate buffered saline , pH 7.4, 150mM NaCl, 0.02% sodium azide and 50% glycerol.
Storage	Store at +4Λ C short term. Store at -20Λ C long term. Avoid freeze / thaw cycle.

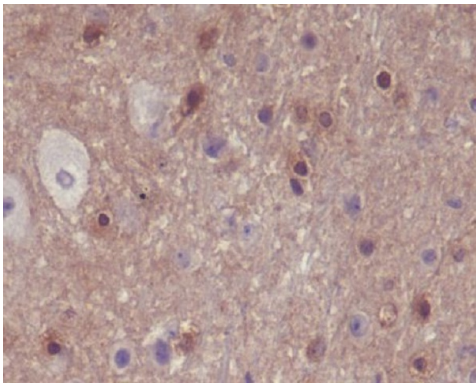
Application Details

WB:1:1000~1:10000IHC:1:50~1:200ICC/IF:1:50~1:200IP:1:50FC:1:50

Images



Western blot analysis of Phospho-PAK1/2/3 expression in HeLa Cell lysate treated with lambda phosphatase.



Immunohistochemical analysis of paraffin-embedded mouse brain, using Phospho-PAK1/2/3 (S144+S141+S139) Antibody.

Product Description

PAK proteins are critical effectors that link RhoGTPases to cytoskeleton reorganization and nuclear signaling. PAK proteins, a family of serine/threonine p21-activating kinases, include PAK1, PAK2, PAK3 and PAK4.

Note: This product is for in vitro research use only