

## eIF4E (Phospho-Ser209) Rabbit mAb

Catalog No: #14157

Package Size: #14157-1 50ul #14157-2 100ul

Orders: order@signalwayantibody.com

Support: tech@signalwayantibody.com

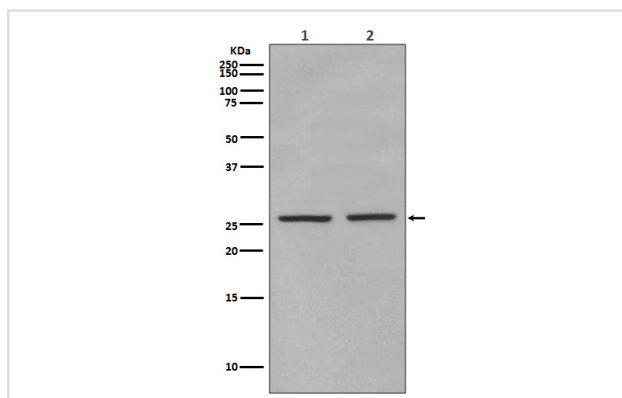
## Description

Product Name	eIF4E (Phospho-Ser209) Rabbit mAb
Host Species	Rabbit
Clonality	Monoclonal
Isotype	Rabbit IgG
Purification	Affinity-chromatography
Applications	WB IHC ICC/IF IP
Species Reactivity	Human Mouse Rat
Specificity	Phospho-eIF4E (S209) antibody detects endogenous levels of total Phospho-eIF4E (S209)
Immunogen Description	A synthesized peptide derived from human Phospho-eIF4E (S209)
Other Names	CBP; eIF-4E; eIF-4F 25 kDa subunit; EIF4F; EIF4E1; EIF4EL1; MGC111573; EIF4E;
Accession No.	Uniprot:P06730
Uniprot	P06730
Calculated MW	25kDa
Formulation	Rabbit IgG in phosphate buffered saline , pH 7.4, 150mM NaCl, 0.02% sodium azide and 50% glycerol.
Storage	Store at +4Λ C short term. Store at -20Λ C long term. Avoid freeze / thaw cycle.

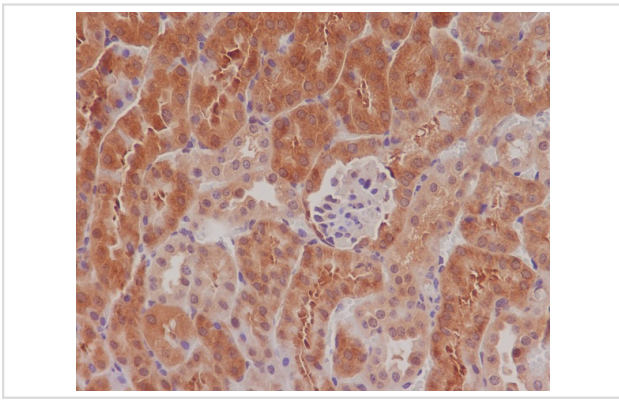
## Application Details

WB:1:1000~1:10000IHC:1:50~1:200ICC/IF:1:50~1:200IP:1:50

## Images



Western blot analysis of eIF4E (phosphoS209) expression in (1) HEK293 cell lysate; (2) Mouse spleen lysate.



Immunohistochemical analysis of paraffin-embedded mouse kidney, using Phospho-eIF4E (S209) antibody.

## Product Description

eIF4E, a protein modulates translation of maternal mRNAs in early embryos before the onset of zygotic transcription. eIF4E also influences the overall rate of translation. eIF4E binds to the 7 methyl GTP cap structure of eukaryotic mRNAs. Phosphorylation of eIF4E on serine 209 regulates the affinity of this protein for the 7 methyl GTP cap and/or RNA. Phosphorylation also enhances the interaction of eIF4E with eIF4G, which form a complex known as eIF4F. eIF4E phosphorylation is correlated with increased translational rate in a number of cell types.

Note: This product is for in vitro research use only