

## Retinoblastoma (Phospho-Ser807) Rabbit mAb

Catalog No: #14165

Package Size: #14165-1 50ul #14165-2 100ul

Orders: order@signalwayantibody.com

Support: tech@signalwayantibody.com

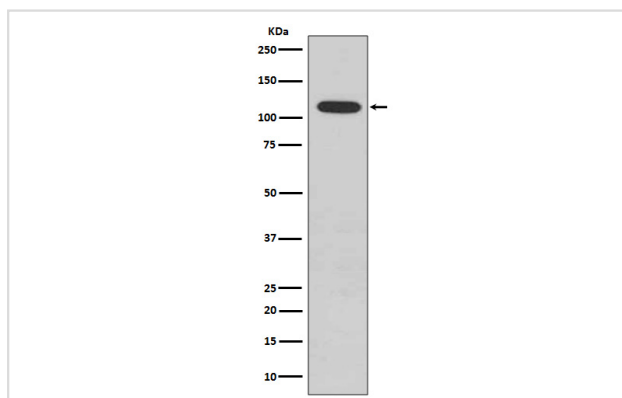
## Description

Product Name	Retinoblastoma (Phospho-Ser807) Rabbit mAb
Host Species	Rabbit
Clonality	Monoclonal
Isotype	Rabbit IgG
Purification	Affinity-chromatography
Applications	WB IHC ICC/IF
Species Reactivity	Human Mouse Rat
Specificity	Phospho-Retinoblastoma (S807) Antibody detects endogenous levels of total Phospho-Retinoblastoma (S807)
Immunogen Description	A synthesized peptide derived from human Phospho-Retinoblastoma (S807)
Other Names	P105-RB; PP105; PP110; RB-1; RB1; Retinoblastoma-associated protein;
Accession No.	Uniprot:P06400
Uniprot	P06400
Calculated MW	106kDa
Formulation	Rabbit IgG in phosphate buffered saline , pH 7.4, 150mM NaCl, 0.02% sodium azide and 50% glycerol.
Storage	Store at +4 $\Lambda$ C short term. Store at -20 $\Lambda$ C long term. Avoid freeze / thaw cycle.

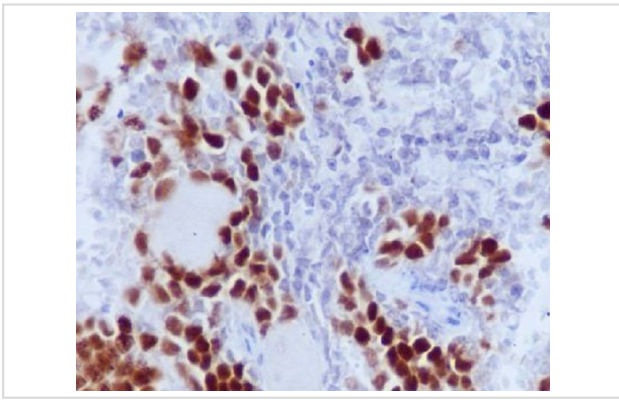
## Application Details

WB: 1:500~1:2000 IHC: 1:50~1:200 ICC/IF: 1:50~1:200

## Images



Western blot analysis of Phospho-Retinoblastoma (S807) expression in K562 cell lysate.



Immunohistochemical analysis of paraffin-embedded mouse spleen, using Phospho-Retinoblastoma (S807) Antibody .

## Product Description

Retinoblastoma (RB) is an embryonic malignant neoplasm of retinal origin. It almost always presents in early childhood and is often bilateral. Spontaneous regression ('cure') occurs in some cases.

Note: This product is for in vitro research use only