

RSK1(Phospho-Ser380) Rabbit mAb

Catalog No: #14173

Package Size: #14173-1 50ul #14173-2 100ul

Orders: order@signalwayantibody.com

Support: tech@signalwayantibody.com

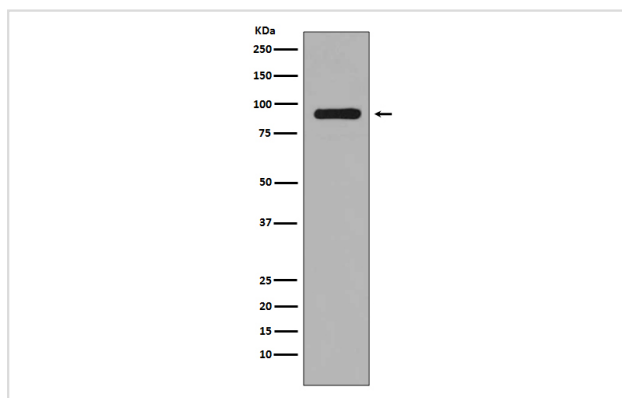
Description

Product Name	RSK1(Phospho-Ser380) Rabbit mAb
Host Species	Rabbit
Clonality	Monoclonal
Isotype	Rabbit IgG
Purification	Affinity-chromatography
Applications	WB ICC/IF IP
Species Reactivity	Human Mouse Rat
Specificity	Phospho-RSK1(S380) Antibody detects endogenous levels of total Phospho-RSK1(S380)
Immunogen Description	A synthesized peptide derived from human Phospho-RSK1(S380)
Other Names	RSK; HU-1; RSK1; MAPKAPK1A; RPS6KA1;
Accession No.	Uniprot:Q15418
Uniprot	Q15418
Calculated MW	90kDa
Formulation	Rabbit IgG in phosphate buffered saline , pH 7.4, 150mM NaCl, 0.02% sodium azide and 50% glycerol.
Storage	Store at +4 Λ C short term. Store at -20 Λ C long term. Avoid freeze / thaw cycle.

Application Details

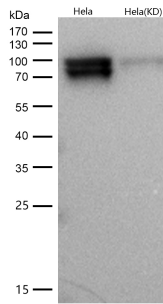
WB:1:500~1:2000IC/IF:1:50~1:200IP:1:50

Images



Western blot analysis of Phospho-RSK1(S380) expression in A431 cell lysate treated with EGF.

All lanes use the Antibody at 1:1K dilution for 1 hour at room temperature.



Product Description

Rsk1 is a member of a family of 90kDa ribosomal protein S6 kinases, which includes Rsk1, Rsk2 and Rsk3. These are broadly expressed serine / threonine protein kinases activated in response to mitogenic stimuli, including extracellular signal regulated protein kinases Erk1 and Erk2. Rsk1 is activated by MAPK in vitro and in vivo via phosphorylation. Active Rsks appear to play a major role in transcriptional regulation by translocating to the nucleus and phosphorylating c-Fos and CREB.

Note: This product is for in vitro research use only