

EGFR (Phospho-Tyr1086) Rabbit mAb

Catalog No: #14176

Package Size: #14176-1 50ul #14176-2 100ul

Orders: order@signalwayantibody.com

Support: tech@signalwayantibody.com

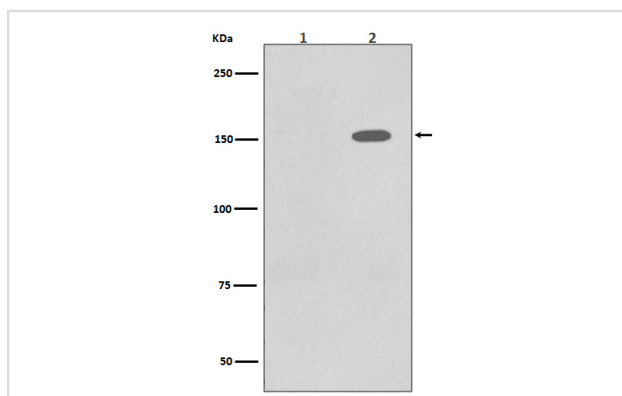
Description

Product Name	EGFR (Phospho-Tyr1086) Rabbit mAb
Host Species	Rabbit
Clonality	Monoclonal
Isotype	Rabbit IgG
Purification	Affinity-chromatography
Applications	WB ICC/IF IP
Species Reactivity	Human
Specificity	Phospho-EGFR (Y1086) Antibody detects endogenous levels of Phospho-EGFR (Y1086)
Immunogen Description	A synthesized peptide derived from human Phospho-EGFR (Y1086)
Other Names	EC 2.7.10.1; ERBB1; Epidermal growth factor receptor precursor; Receptor protein-tyrosine kinase ErbB-1; kinase EGFR;
Accession No.	Uniprot:P00533
Uniprot	P00533
Calculated MW	150kDa
Formulation	Rabbit IgG in phosphate buffered saline , pH 7.4, 150mM NaCl, 0.02% sodium azide and 50% glycerol.
Storage	Store at +4 Λ C short term. Store at -20 Λ C long term. Avoid freeze / thaw cycle.

Application Details

WB:1:500~1:2000 ICC/IF:1:50~1:200 IP:1:50

Images



Western blot analysis of Phospho-EGFR (Y1086) expression in (1) A431 cell lysate; (2) A431 cell lysate treated with EGF.

Product Description

The epidermal growth factor (EGF) receptor is a transmembrane tyrosine kinase that belongs to the HER/ErbB protein family. Ligand binding results in receptor dimerization, autophosphorylation, activation of downstream signaling, internalization, and lysosomal degradation. Phospho-EGF Receptor (Tyr1086) Antibody is directed against a previously unpublished EGF receptor phosphorylation site at Tyr1086, Phosphorlation of EGF receptor at

Tyr1086 was observed in select carcinoma cell lines and in tumors.

Note: This product is for in vitro research use only