

EGFR (Phospho-Y1197) Rabbit mAb

Catalog No: #14180

Package Size: #14180-1 50ul #14180-2 100ul

Orders: order@signalwayantibody.com

Support: tech@signalwayantibody.com

Description

| | |
|-----------------------|--|
| Product Name | EGFR (Phospho-Y1197) Rabbit mAb |
| Host Species | Rabbit |
| Clonality | Monoclonal |
| Isotype | Rabbit IgG |
| Purification | Affinity-chromatography |
| Applications | WB IHC ICC/IF IP |
| Species Reactivity | Human |
| Specificity | Phospho-EGFR (Y1197) Antibody detects endogenous levels of Phospho-EGFR (Y1197) |
| Immunogen Description | A synthesized peptide derived from human EGFR around the phosphorylation site of Y1197 |
| Other Names | EC 2.7.10.1; ERBB1; Epidermal growth factor receptor precursor; kinase EGFR; |
| Accession No. | Uniprot:P00533 |
| Uniprot | P00533 |
| Calculated MW | 175kDa |
| Formulation | Rabbit IgG in phosphate buffered saline , pH 7.4, 150mM NaCl, 0.02% sodium azide and 50% glycerol. |
| Storage | Store at +4 Λ C short term. Store at -20 Λ C long term. Avoid freeze / thaw cycle. |

Application Details

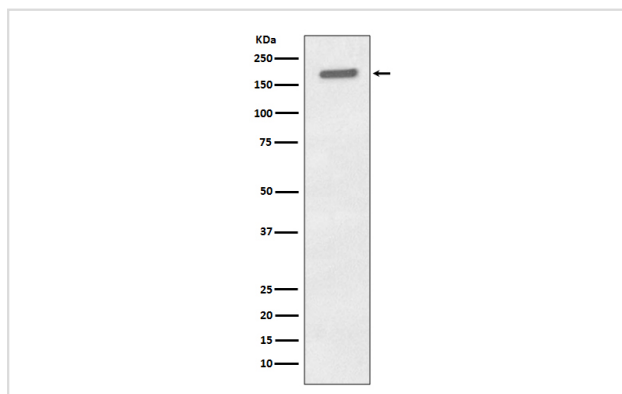
WB: 1:500~1:2000

IHC: 1:50~1:100

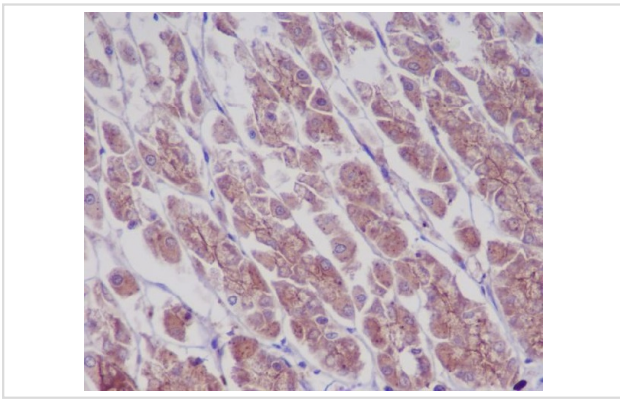
ICC/IF: 1:50~1:100

IP: 1:20

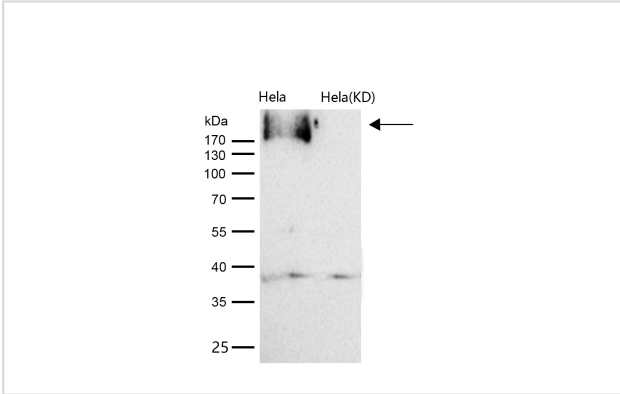
Images



Western blot analysis of Phospho-EGFR (Y1197) expression in A431 cell lysate treated with EGF.



Immunohistochemical analysis of paraffin-embedded rat stomach, using Phospho-EGFR (Y1197) Antibody.



All lanes use the Antibody at 1:1K dilution for 1 hour at room temperature.

Product Description

The epidermal growth factor (EGF) receptor is a transmembrane tyrosine kinase that belongs to the HER/ErbB protein family. Ligand binding results in receptor dimerization, autophosphorylation, activation of downstream signaling, internalization, and lysosomal degradation. The GRB2 adaptor protein binds activated EGFR at phospho-Tyr1068.

Note: This product is for in vitro research use only