

## Tau (Phospho-Thr231) Rabbit mAb

Catalog No: #14182

Package Size: #14182-1 50ul #14182-2 100ul

Orders: order@signalwayantibody.com

Support: tech@signalwayantibody.com

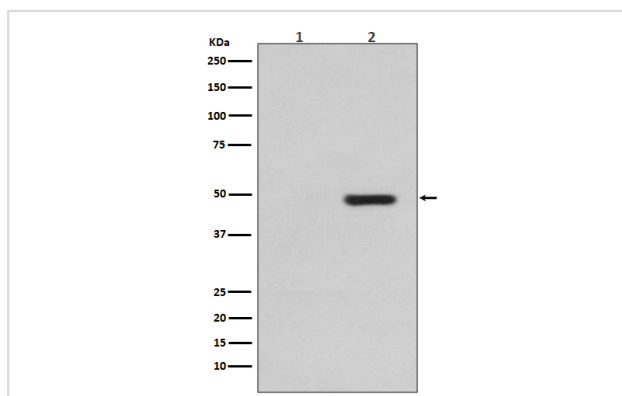
## Description

Product Name	Tau (Phospho-Thr231) Rabbit mAb
Host Species	Rabbit
Clonality	Monoclonal
Isotype	Rabbit IgG
Purification	Affinity-chromatography
Applications	WB IHC IP
Species Reactivity	Human Mouse Rat
Specificity	Phospho-Tau (T231) Antibody detects endogenous levels of Phospho-Tau (T231)
Immunogen Description	A synthesized peptide derived from human Phospho-Tau (T231)
Other Names	MAPT; Microtubule-associated protein tau; MTBT1; Neurofibrillary tangle protein; Paired helical filament-tau; PHF-tau;
Accession No.	Uniprot:P10636
Uniprot	P10636
Calculated MW	46kDa
Formulation	Rabbit IgG in phosphate buffered saline , pH 7.4, 150mM NaCl, 0.02% sodium azide and 50% glycerol.
Storage	Store at +4 $\Lambda$ C short term. Store at -20 $\Lambda$ C long term. Avoid freeze / thaw cycle.

## Application Details

WB:1:500~1:2000IHC:1:50~1:200IP:1:50

## Images



Western blot analysis of Phospho-Tau (T231) expression in (1) SH-SY5Y cell lysate; (2) SH-SY5Y cell lysate, treated with sorbitol.

## Product Description

Tau is a heterogeneous microtubule-associated protein that promotes and stabilizes microtubule assembly, especially in axons. Six isoforms with different amino-terminal inserts and different numbers of tandem repeats near the carboxy-terminus have been identified, and tau is hyperphosphorylated at approximately 25 sites by ERK, GSK-3 and CDK5. Phosphorylation decreases the ability of tau to bind to microtubules.

Neurofibrillary tangles are a major hallmark of Alzheimer's disease and these tangles are bundles of paired helical filaments composed of hyperphosphorylated tau.

---

Note: This product is for in vitro research use only