

ATF2 (Phospho-Thr71) Rabbit mAb

Catalog No: #14183

Package Size: #14183-1 50ul #14183-2 100ul

Orders: order@signalwayantibody.com

Support: tech@signalwayantibody.com

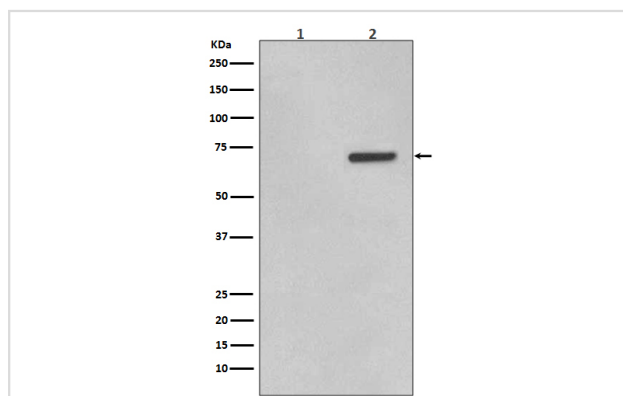
Description

Product Name	ATF2 (Phospho-Thr71) Rabbit mAb
Host Species	Rabbit
Clonality	Monoclonal
Isotype	Rabbit IgG
Purification	Affinity-chromatography
Applications	WB ICC/IF IP
Species Reactivity	Human
Specificity	Phospho-ATF2 (T71) Antibody detects endogenous levels of Phospho-ATF2 (T71)
Immunogen Description	A synthesized peptide derived from human Phospho-ATF2 (T71)
Other Names	ATF2, Activating 2, CREB2, CREBP1, Cyclic-AMP-dependent ATF-2, HB16, MXBP protein, cAMP response element binding protein CRE-BP1;
Accession No.	Uniprot:P15336
Uniprot	P15336
Calculated MW	70kDa
Formulation	Rabbit IgG in phosphate buffered saline , pH 7.4, 150mM NaCl, 0.02% sodium azide and 50% glycerol.
Storage	Store at +4ℳ C short term. Store at -20ℳ C long term. Avoid freeze / thaw cycle.

Application Details

WB:1:500~1:2000ICC/IF:1:50~1:200IP:1:30

Images



Western blot analysis of Phospho-ATF2 (T71) expression in (1) HeLa cell lysate; (2) HeLa cell lysate treated with Anisomycin.

Product Description

The transcription factor ATF-2 (also called CRE-BP1) binds to both AP-1 and CRE DNA response elements and is a member of the ATF/CREB family of leucine zipper proteins. ATF-2 interacts with a variety of viral oncoproteins and cellular tumor suppressors and is a target of the SAPK/JNK and p38 MAP kinase signaling pathways. Various forms of cellular stress, including genotoxic agents, inflammatory cytokines, and UV irradiation, stimulate the

transcriptional activity of ATF-2. Cellular stress activates ATF-2 by phosphorylation of Thr69 and Thr71.

Note: This product is for in vitro research use only