

## Synapsin I (Phospho-Ser9) Rabbit mAb

Catalog No: #14187

Package Size: #14187-1 50ul #14187-2 100ul

Orders: order@signalwayantibody.com

Support: tech@signalwayantibody.com

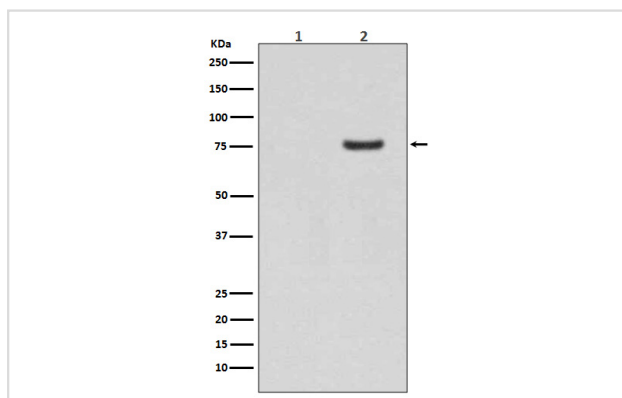
## Description

Product Name	Synapsin I (Phospho-Ser9) Rabbit mAb
Host Species	Rabbit
Clonality	Monoclonal
Isotype	Rabbit IgG
Purification	Affinity-chromatography
Applications	WB IHC
Species Reactivity	Human Mouse Rat
Specificity	Phospho-Synapsin I (S9) Antibody detects endogenous levels of Phospho-Synapsin I (S9)
Immunogen Description	A synthesized peptide derived from human Phospho-Synapsin I (S9)
Other Names	Brain protein 4.1; SYN-1; synapsin I;
Accession No.	Uniprot:P17600
Uniprot	P17600
Calculated MW	77kDa
Formulation	Rabbit IgG in phosphate buffered saline , pH 7.4, 150mM NaCl, 0.02% sodium azide and 50% glycerol.
Storage	Store at +4Λ C short term. Store at -20Λ C long term. Avoid freeze / thaw cycle.

## Application Details

WB:1:500~1:2000IHC:1:50~1:200

## Images



Western blot analysis of Phospho-Synapsin I (S9) expression in (1) Human brain lysate; (2) Human brain lysate treated with AP.

## Product Description

This gene is a member of the synapsin gene family. Synapsins encode neuronal phosphoproteins which associate with the cytoplasmic surface of synaptic vesicles. Family members are characterized by common protein domains, and they are implicated in synaptogenesis and the modulation of neurotransmitter release, suggesting a potential role in several neuropsychiatric diseases.

---

Note: This product is for in vitro research use only