

## RPA2 (Phospho-Thr21) Rabbit mAb

Catalog No: #14189

Package Size: #14189-1 50ul #14189-2 100ul

Orders: order@signalwayantibody.com

Support: tech@signalwayantibody.com

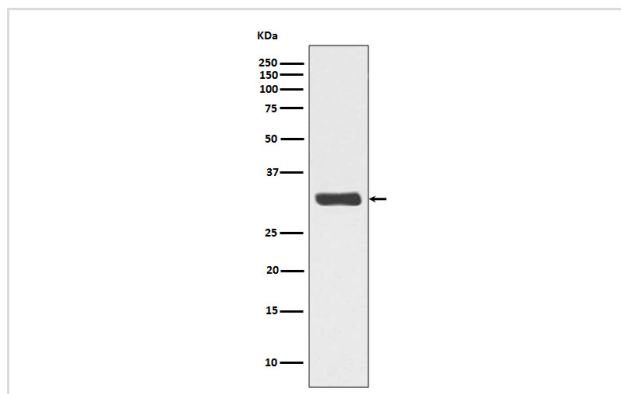
## Description

Product Name	RPA2 (Phospho-Thr21) Rabbit mAb
Host Species	Rabbit
Clonality	Monoclonal
Isotype	Rabbit IgG
Purification	Affinity-chromatography
Applications	WB IP
Species Reactivity	Human Mouse Rat
Specificity	Phospho-RPA2 (T21) Antibody detects endogenous levels of Phospho-RPA2 (T21)
Immunogen Description	A synthesized peptide derived from human Phospho-RPA2 (T21)
Other Names	REPA2; RF-A; RP-A; RPA2; RPA32; replication factor-A protein 2; replication protein A 32 kDa subunit; replication protein A2;
Accession No.	Uniprot:P15927
Uniprot	P15927
Calculated MW	32kDa
Formulation	Rabbit IgG in phosphate buffered saline , pH 7.4, 150mM NaCl, 0.02% sodium azide and 50% glycerol.
Storage	Store at +4 $\Lambda$ C short term. Store at -20 $\Lambda$ C long term. Avoid freeze / thaw cycle.

## Application Details

WB:1:5000~1:10000IP:1:20

## Images



Western blot analysis of Phospho-RPA2 (T21) expression in HeLa cell lysate treated with Calyculin A.

## Product Description

As part of the heterotrimeric replication protein A complex (RPA/RP-A), binds and stabilizes single-stranded DNA intermediates, that form during DNA replication or upon DNA stress. It prevents their reannealing and in parallel, recruits and activates different proteins and complexes involved in DNA metabolism. Thereby, it plays an essential role both in DNA replication and the cellular response to DNA damage. In the cellular response to DNA

damage, the RPA complex controls DNA repair and DNA damage checkpoint activation.

---

Note: This product is for in vitro research use only