

SIRT1 (Phospho-Ser47) Rabbit mAb

Catalog No: #14192

Package Size: #14192-1 50ul #14192-2 100ul

Orders: order@signalwayantibody.com

Support: tech@signalwayantibody.com

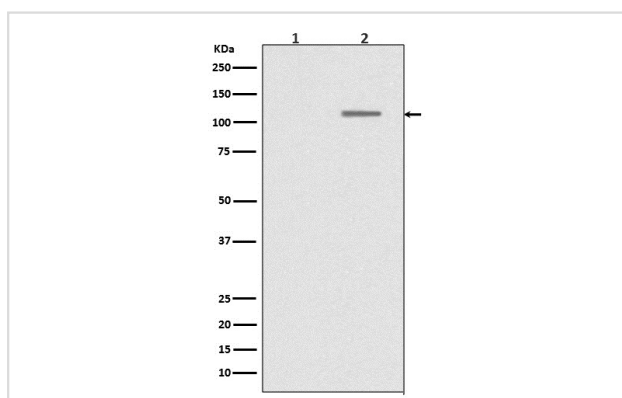
Description

Product Name	SIRT1 (Phospho-Ser47) Rabbit mAb
Host Species	Rabbit
Clonality	Monoclonal
Isotype	Rabbit IgG
Purification	Affinity-chromatography
Applications	WB IHC ICC/IF
Species Reactivity	Human
Specificity	Phospho-SIRT1 (S47) Antibody detects endogenous levels of Phospho-SIRT1 (S47)
Immunogen Description	A synthesized peptide derived from human Phospho-SIRT1 (S47)
Other Names	hSIR2; hSIRT1; NAD-dependent deacetylase sirtuin 1; SIR1; SIR2-like protein 1;
Accession No.	Uniprot:Q96EB6
Uniprot	Q96EB6
Calculated MW	110kDa
Formulation	Rabbit IgG in phosphate buffered saline , pH 7.4, 150mM NaCl, 0.02% sodium azide and 50% glycerol.
Storage	Store at +4 Λ C short term. Store at -20 Λ C long term. Avoid freeze / thaw cycle.

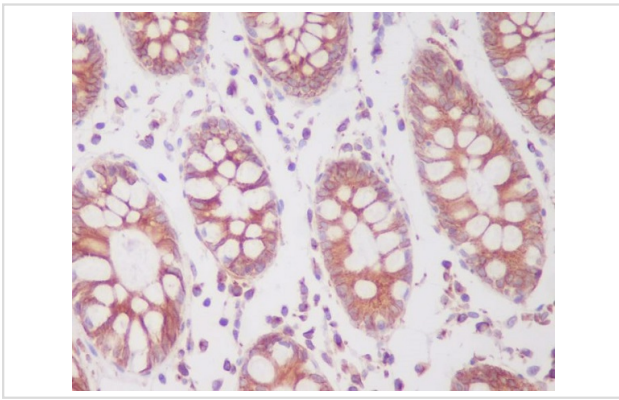
Application Details

WB:1:1000~1:2000IHC:1:50~1:200ICC/IF:1:50~1:200

Images



Western blot analysis of Phospho-SIRT1 (S47) expression in (1) HEK293 cell lysate; (2) HEK293 cell lysate treated with LP.



Immunohistochemical analysis of paraffin-embedded human colon, using Phospho-SIRT1 (S47) Antibody.

Product Description

This gene encodes a member of the sirtuin family of proteins, homologs to the yeast Sir2 protein. Members of the sirtuin family are characterized by a sirtuin core domain and grouped into four classes. The functions of human sirtuins have not yet been determined; however, yeast sirtuin proteins are known to regulate epigenetic gene silencing and suppress recombination of rDNA.

Note: This product is for in vitro research use only