

## CrkII (Tyr221) Rabbit mAb

Catalog No: #14193

Package Size: #14193-1 50ul #14193-2 100ul

Orders: order@signalwayantibody.com

Support: tech@signalwayantibody.com

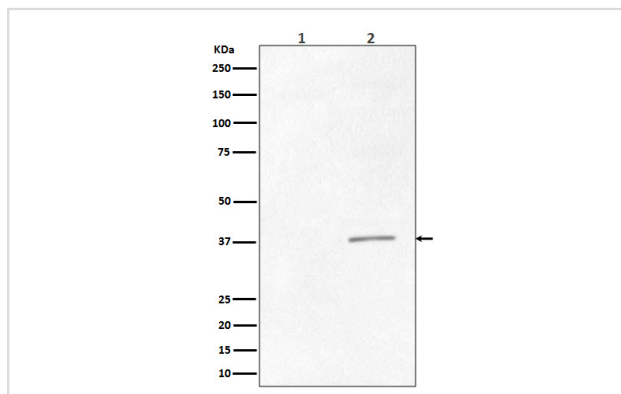
## Description

Product Name	CrkII (Tyr221) Rabbit mAb
Host Species	Rabbit
Clonality	Monoclonal
Isotype	Rabbit IgG
Purification	Affinity-chromatography
Applications	WB ICC/IF
Species Reactivity	Human
Specificity	Phospho-CrkII (Tyr221) Antibody detects endogenous levels of Phospho-CrkII (Tyr221)
Immunogen Description	A synthesized peptide derived from human Phospho-CrkII (Tyr221)
Other Names	Adapter molecule crk; avian sarcoma virus CT10 (v-crk) oncogene homolog; CRK; CRKII; Proto-oncogene c-Crk;
Accession No.	Uniprot:P46108
Uniprot	P46108
Calculated MW	42kDa
Formulation	Rabbit IgG in phosphate buffered saline , pH 7.4, 150mM NaCl, 0.02% sodium azide and 50% glycerol.
Storage	Store at +4 $\Lambda$ C short term. Store at -20 $\Lambda$ C long term. Avoid freeze / thaw cycle.

## Application Details

WB:1:1000~1:2000 ICC/IF:1:50~1:200

## Images



Western blot analysis of Phospho-CrkII (Tyr221) expression in (1) K562 cell lysate treated with AP; (2) K562 cell lysate.

## Product Description

The Crk-I and Crk-II forms differ in their biological activities. Crk-II has less transforming activity than Crk-I. Crk-II mediates attachment-induced MAPK8 activation, membrane ruffling and cell motility in a Rac-dependent manner. Involved in phagocytosis of apoptotic cells and cell motility via its interaction with DOCK1 and DOCK4. May regulate the EFNA5-EPHA3 signaling.

---

Note: This product is for in vitro research use only