

## Chk1 (Phospho-Ser296) Rabbit mAb

Catalog No: #14195

Package Size: #14195-1 50ul #14195-2 100ul

Orders: order@signalwayantibody.com

Support: tech@signalwayantibody.com

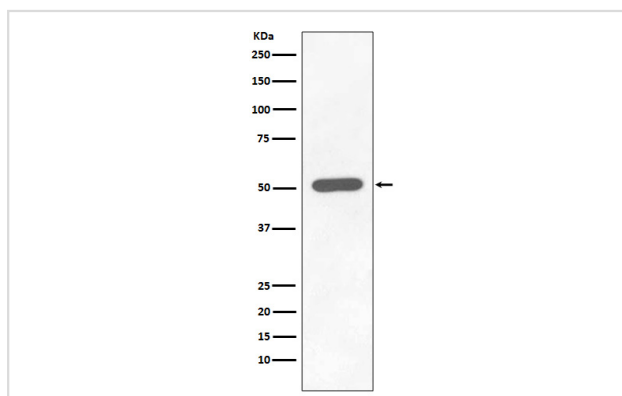
## Description

Product Name	Chk1 (Phospho-Ser296) Rabbit mAb
Host Species	Rabbit
Clonality	Monoclonal
Isotype	Rabbit IgG
Purification	Affinity-chromatography
Applications	WB
Species Reactivity	Human
Specificity	Phospho-Chk1 (S296) Antibody detects endogenous levels of Phospho-Chk1 (S296)
Immunogen Description	A synthesized peptide derived from human Phospho-Chk1 (S296)
Other Names	Checkpoint, <i>S. pombe</i> , homolog of, 1; CHEK1; CHK1; CHK1 checkpoint homolog ( <i>S. pombe</i> ); Serine/threonine-protein kinase Chk1;
Accession No.	Uniprot:O14757
Uniprot	O14757
Calculated MW	54kDa
Formulation	Rabbit IgG in phosphate buffered saline , pH 7.4, 150mM NaCl, 0.02% sodium azide and 50% glycerol.
Storage	Store at +4 $\Lambda$ C short term. Store at -20 $\Lambda$ C long term. Avoid freeze / thaw cycle.

## Application Details

WB:1:500~1:2000

## Images



Western blot analysis of Phospho-Chk1 (S296) expression in HEK293 cell lysate Treated with Calyculin.

## Product Description

Chk1 kinase acts downstream of ATM/ATR kinase and plays an important role in DNA damage checkpoint control, embryonic development, and tumor suppression. Activation of Chk1 involves phosphorylation at Ser317 and Ser345 by ATM/ATR, followed by autophosphorylation of Ser296. Activation occurs in response to blocked DNA replication and certain forms of genotoxic stress.

---

Note: This product is for in vitro research use only