

EGFR (Phospho-Ser695) Rabbit mAb

Catalog No: #14201

Package Size: #14201-1 50ul #14201-2 100ul

Orders: order@signalwayantibody.com

Support: tech@signalwayantibody.com

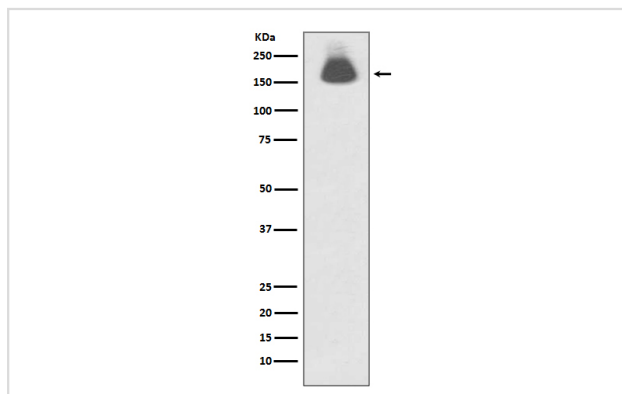
Description

Product Name	EGFR (Phospho-Ser695) Rabbit mAb
Host Species	Rabbit
Clonality	Monoclonal
Isotype	Rabbit IgG
Purification	Affinity-chromatography
Applications	WB ICC/IF
Species Reactivity	Human
Specificity	Phospho-EGFR (S695) Antibody detects endogenous levels of Phospho-EGFR (S695)
Immunogen Description	A synthesized peptide derived from human EGFR
Other Names	Errp; HER1; erb-b2 receptor tyrosine kinase 1; Epidermal growth factor receptor; Proto-oncogene c-ErbB-1; Receptor tyrosine-protein kinase erbB-1; ERBB; ERBB1; EGFR; SA7;
Accession No.	Uniprot:P00533
Uniprot	P00533
Calculated MW	175kDa
Formulation	Rabbit IgG in phosphate buffered saline , pH 7.4, 150mM NaCl, 0.02% sodium azide and 50% glycerol.
Storage	Store at +4 Λ C short term. Store at -20 Λ C long term. Avoid freeze / thaw cycle.

Application Details

WB:1:1000~1:2000 ICC/IF:1:50~1:200

Images



Western blot analysis of Phospho-EGFR (S695) expression in A431 cell lysate treated with EGF.

Product Description

The epidermal growth factor (EGF) receptor is a 170 kDa transmembrane tyrosine kinase that belongs to the HER/ErbB protein family. Activate several signaling cascades to convert extracellular cues into appropriate cellular responses.

Note: This product is for in vitro research use only