

Cyclin E1 (Phospho-Thr77) Rabbit mAb

Catalog No: #14204

Package Size: #14204-1 50ul #14204-2 100ul

Orders: order@signalwayantibody.com

Support: tech@signalwayantibody.com

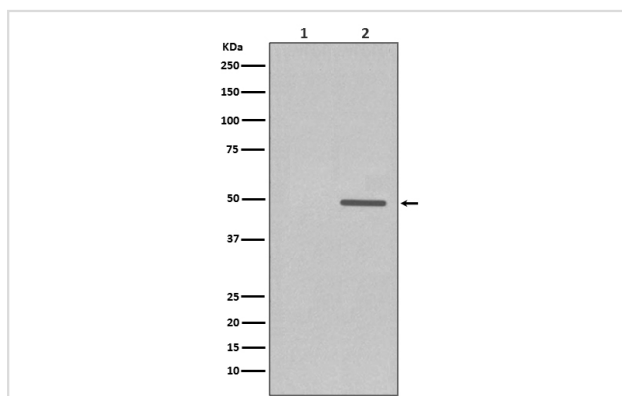
Description

Product Name	Cyclin E1 (Phospho-Thr77) Rabbit mAb
Host Species	Rabbit
Clonality	Monoclonal
Isotype	Rabbit IgG
Purification	Affinity-chromatography
Applications	WB IHC ICC/IF
Species Reactivity	Human
Specificity	Phospho-Cyclin E1 (T77) Antibody detects endogenous levels of Phospho-Cyclin E1 (T77)
Immunogen Description	A synthesized peptide derived from human Cyclin E1
Other Names	CCNE; Ccne1; cyclin E variant ex5del; cyclin E variant ex7del; Cyclin E1; Cyclin Es; Cyclin Et; G1/S specific cyclin E; G1/S-specific cyclin-E1;
Accession No.	Uniprot:P24864
Uniprot	P24864
Calculated MW	48kDa
Formulation	Rabbit IgG in phosphate buffered saline , pH 7.4, 150mM NaCl, 0.02% sodium azide and 50% glycerol.
Storage	Store at +4 Λ C short term. Store at -20 Λ C long term. Avoid freeze / thaw cycle.

Application Details

WB:1:1000~1:2000IHC:1:50~1:200ICC/IF:1:50~1:200

Images



Western blot analysis of Phospho-Cyclin E1 (T77) expression in (1) JAR cell treated with Lambda Phosphatase lysate; (2) JAR cell lysate.

Product Description

Cyclin E1 and cyclin E2 can associate with and activate CDK2. Upon DNA damage, upregulation/activation of the CDK inhibitors p21 Waf1/Cip1 and p27 Kip1 prevent cyclin E/CDK2 activation, resulting in G1/S arrest. Cyclin E1 is phosphorylated at multiple sites in vivo including Thr62, Ser88, Ser72, Thr380 and Ser384, and is controlled by at least two kinases, CDK2 and GSK-3.

Note: This product is for in vitro research use only