

PLK1 (Phospho-Thr210) Rabbit mAb

Catalog No: #14206

Package Size: #14206-1 50ul #14206-2 100ul

Orders: order@signalwayantibody.com

Support: tech@signalwayantibody.com

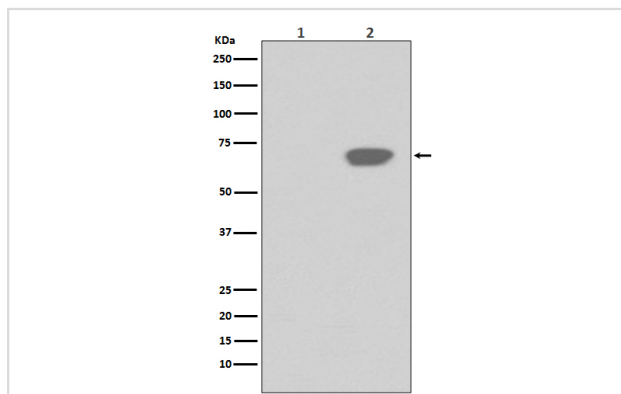
Description

Product Name	PLK1 (Phospho-Thr210) Rabbit mAb
Host Species	Rabbit
Clonality	Monoclonal
Isotype	Rabbit IgG
Purification	Affinity-chromatography
Applications	WB
Species Reactivity	Human
Specificity	Phospho-PLK1 (T210) Antibody detects endogenous levels of Phospho-PLK1 (T210)
Immunogen Description	A synthesized peptide derived from human PLK1
Other Names	Cell cycle regulated protein kinase; PLK 1; PLK; Polo like kinase 1 ; Serine/threonine protein kinase 13; Serine/threonine protein kinase PLK1; STPK 13;
Accession No.	Uniprot:P53350
Uniprot	P53350
Calculated MW	68kDa
Formulation	Rabbit IgG in phosphate buffered saline , pH 7.4, 150mM NaCl, 0.02% sodium azide and 50% glycerol.
Storage	Store at +4 Λ C short term. Store at -20 Λ C long term. Avoid freeze / thaw cycle.

Application Details

WB:1:1000~1:2000

Images



Western blot analysis of Phospho-PLK1 (T210) expression in (1) HeLa cell lysate; (2) HeLa cell treated with nocodazole lysate.

Product Description

Required for recovery after DNA damage checkpoint and entry into mitosis. Required for kinetochore localization of BUB1B. Phosphorylates SGOL1. Required for spindle pole localization of isoform 3 of SGOL1 and plays a role in regulating its centriole cohesion function. Phosphorylates BORA, and thereby promotes the degradation of BORA. Contributes to the regulation of AURKA function. Regulates TP53 stability through phosphorylation of

TOPORS.

Note: This product is for in vitro research use only