

## Smad2 (Phospho-Ser250) Rabbit mAb

Catalog No: #14211

Package Size: #14211-1 50ul #14211-2 100ul

Orders: [order@signalwayantibody.com](mailto:order@signalwayantibody.com)Support: [tech@signalwayantibody.com](mailto:tech@signalwayantibody.com)

## Description

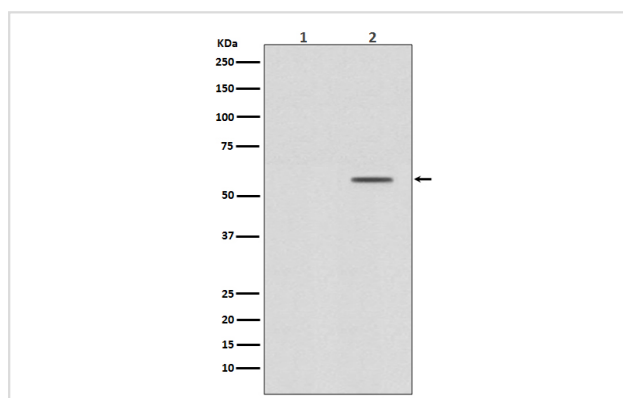
Product Name	Smad2 (Phospho-Ser250) Rabbit mAb
Host Species	Rabbit
Clonality	Monoclonal
Isotype	Rabbit IgG
Purification	Affinity-chromatography
Applications	WB FC
Species Reactivity	Human Mouse Rat
Specificity	Phospho-Smad2 (S250) Antibody detects endogenous levels of Phospho-Smad2 (S250)
Immunogen Description	A synthesized peptide derived from human Smad2
Other Names	JV18-1, MADH2, MADR2, Mad-related protein 2, Mothers against DPP homolog 2, Mothers against decapentaplegic homolog 2, Smad 2;
Accession No.	Uniprot:Q15796
Uniprot	Q15796
Calculated MW	58kDa
Formulation	Rabbit IgG in phosphate buffered saline , pH 7.4, 150mM NaCl, 0.02% sodium azide and 50% glycerol.
Storage	Store at +4ℳ C short term. Store at -20ℳ C long term. Avoid freeze / thaw cycle.

## Application Details

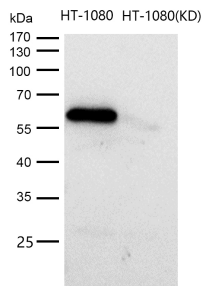
WB:1:1000~1:2000

FC:1:20

## Images



Western blot analysis of Phospho-Smad2 (S250) expression in (1) HeLa cell treated with alkaline phosphatase lysate; (2) HeLa cell lysate.



All lanes use the Antibody at 1:1K dilution for 1 hour at room temperature.

## Product Description

The protein encoded by this gene belongs to the SMAD, a family of proteins similar to the gene products of the *Drosophila* gene 'mothers against decapentaplegic' (Mad) and the *C. elegans* gene Sma. SMAD proteins are signal transducers and transcriptional modulators that mediate multiple signaling pathways.

Note: This product is for in vitro research use only