

Smad2 (Phospho-Ser255) Rabbit mAb

Catalog No: #14212

Package Size: #14212-1 50ul #14212-2 100ul

Orders: order@signalwayantibody.com

Support: tech@signalwayantibody.com

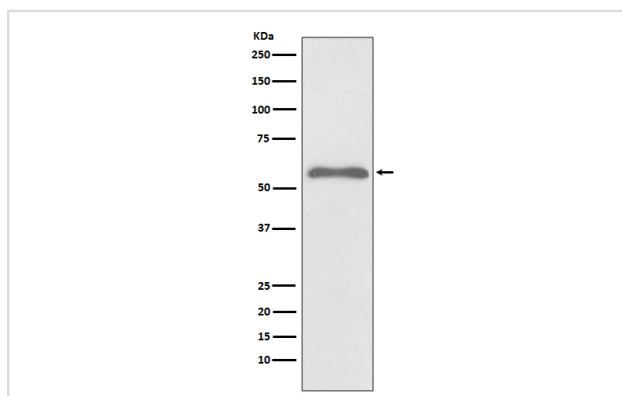
Description

Product Name	Smad2 (Phospho-Ser255) Rabbit mAb
Host Species	Rabbit
Clonality	Monoclonal
Isotype	Rabbit IgG
Purification	Affinity-chromatography
Applications	WB IHC IP
Species Reactivity	Human Mouse Rat
Specificity	Phospho-Smad2 (S255) Antibody detects endogenous levels of Phospho-Smad2 (S255)
Immunogen Description	A synthesized peptide derived from human Smad2
Other Names	JV18-1, MADH2, MADR2, Mad-related protein 2, Mothers against DPP homolog 2, Mothers against decapentaplegic homolog 2, Smad 2;
Accession No.	Uniprot:Q15796
Uniprot	Q15796
Calculated MW	52kDa
Formulation	Rabbit IgG in phosphate buffered saline , pH 7.4, 150mM NaCl, 0.02% sodium azide and 50% glycerol.
Storage	Store at +4 Λ C short term. Store at -20 Λ C long term. Avoid freeze / thaw cycle.

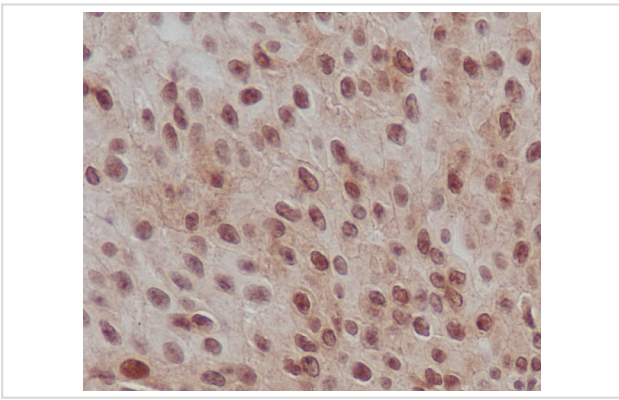
Application Details

WB:1:1000~1:2000IHC:1:50~1:200IP:1:50

Images



Western blot analysis of Phospho-Smad2 (S255) expression in Hela cell treated with Okadaic acid and Calyculin A lysate.



Immunohistochemical analysis of paraffin-embedded human transitional cell carcinoma of bladder, using Phospho-Smad2 (S255) Antibody.

Product Description

SMAD proteins are signal transducers and transcriptional modulators that mediate multiple signaling pathways. This protein mediates the signal of the transforming growth factor (TGF)-beta, and thus regulates multiple cellular processes, such as cell proliferation, apoptosis, and differentiation.

Note: This product is for in vitro research use only