

## Paxillin (Phospho-Tyr118) Rabbit mAb

Catalog No: #14217

Package Size: #14217-1 50ul #14217-2 100ul

Orders: order@signalwayantibody.com

Support: tech@signalwayantibody.com

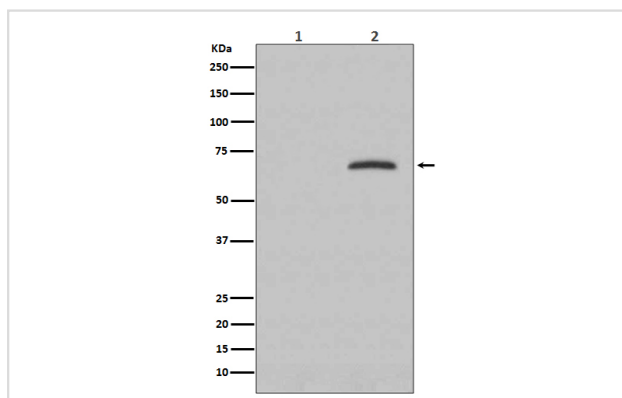
## Description

Product Name	Paxillin (Phospho-Tyr118) Rabbit mAb
Host Species	Rabbit
Clonality	Monoclonal
Isotype	Rabbit IgG
Purification	Affinity-chromatography
Applications	WB
Species Reactivity	Human Mouse Rat
Specificity	Phospho-Paxillin (Y118) Antibody detects endogenous levels of Phospho-Paxillin (Y118)
Immunogen Description	A synthesized peptide derived from human Paxillin
Other Names	Paired box protein Pax 1; PAX 1; PAX1; Paxillin alpha; Paxillin; PXN; PXN protein;
Accession No.	Uniprot:P49023
Uniprot	P49023
Calculated MW	68kDa
Formulation	Rabbit IgG in phosphate buffered saline , pH 7.4, 150mM NaCl, 0.02% sodium azide and 50% glycerol.
Storage	Store at +4Λ C short term. Store at -20Λ C long term. Avoid freeze / thaw cycle.

## Application Details

WB:1:1000~1:2000

## Images



Western blot analysis of Phospho-Paxillin (Y118) expression in (1) HeLa cell lysate; (2) HeLa cell treated with pervanadate.

## Product Description

Cytoskeletal protein involved in actin-membrane attachment at sites of cell adhesion to the extracellular matrix (focal adhesion).

---

Note: This product is for in vitro research use only