

## CDC37 (Phospho-Ser13) Rabbit mAb

Catalog No: #14226

Package Size: #14226-1 50ul #14226-2 100ul

Orders: order@signalwayantibody.com

Support: tech@signalwayantibody.com

## Description

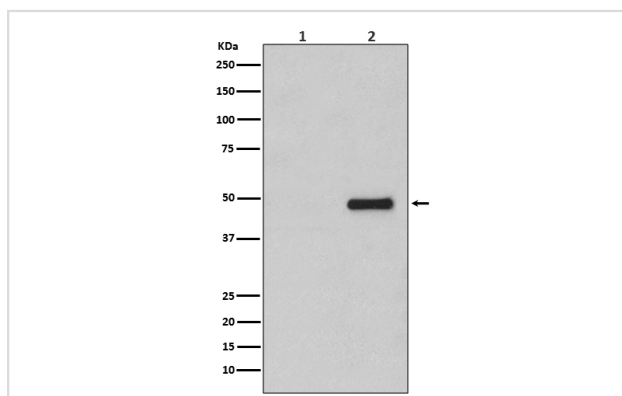
Product Name	CDC37 (Phospho-Ser13) Rabbit mAb
Host Species	Rabbit
Clonality	Monoclonal
Isotype	Rabbit IgG
Purification	Affinity-chromatography
Applications	WB IP
Species Reactivity	Human Mouse Rat
Specificity	Phospho-CDC37 (S13) Antibody detects endogenous levels of total Phospho-CDC37 (S13)
Immunogen Description	A synthesized peptide derived from human Phospho-CDC37 (S13)
Other Names	CC37; Hsp90 chaperone protein kinase-targeting subunit; Hsp90 co-chaperone Cdc37;
Accession No.	Uniprot:Q16543
Uniprot	Q16543
Calculated MW	50kDa
Formulation	Rabbit IgG in phosphate buffered saline , pH 7.4, 150mM NaCl, 0.02% sodium azide and 50% glycerol.
Storage	Store at +4 $\Lambda$ C short term. Store at -20 $\Lambda$ C long term. Avoid freeze / thaw cycle.

## Application Details

WB: 1:500~1:2000

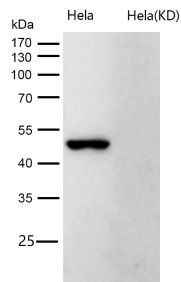
IP: 1:50

## Images



Western blot analysis of Phospho-CDC37 (S13) expression in (1) Jurkat cell lysate treated with Alkaline Phosphatase; (2) Jurkat cell lysate.

All lanes use the Antibody at 1:1K dilution for 1 hour at room temperature.



## Product Description

CDC37 is an important component of the HSP90 chaperone complex. It was initially identified for its involvement in cell-cycle progression and was later found to have a much broader role as a chaperone for a wide variety of kinases and other proteins. CDC37 protein has an amino-terminal kinase binding domain followed by a central HSP90 binding domain.

Note: This product is for in vitro research use only