

## Raf1 (Phospho-Ser621) Rabbit mAb

Catalog No: #14227

Package Size: #14227-1 50ul #14227-2 100ul

Orders: order@signalwayantibody.com

Support: tech@signalwayantibody.com

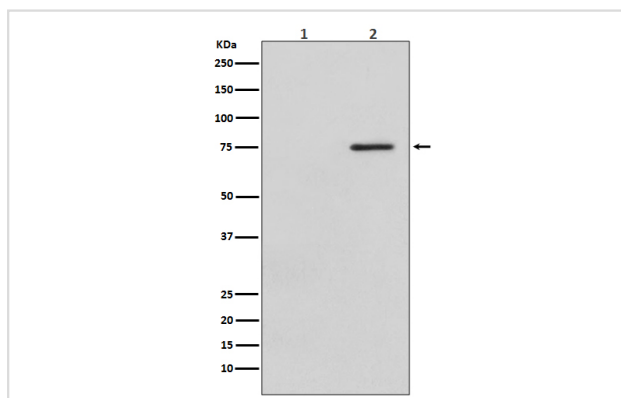
## Description

|                       |   |
|-----------------------|---|
| Product Name          | Raf1 (Phospho-Ser621) Rabbit mAb  |
| Host Species          | Rabbit  |
| Clonality             | Monoclonal  |
| Isotype               | Rabbit IgG  |
| Purification          | Affinity-chromatography   |
| Applications          | WB  |
| Species Reactivity    | Human Mouse Rat   |
| Specificity           | Phospho-Raf1 (S621) Antibody detects endogenous levels of total Phospho-Raf1 (S621)                       |
| Immunogen Description | A synthesized peptide derived from human Phospho-Raf1 (S621)  |
| Other Names           | C-Raf; CRAF; Protein kinase raf 1; RAF1; Raf proto-oncogene serine/threonine-protein kinase; kinase Raf1; |
| Accession No.         | Uniprot:P04049  |
| Uniprot               | P04049  |
| Calculated MW         | 73kDa   |
| Formulation           | Rabbit IgG in phosphate buffered saline , pH 7.4, 150mM NaCl, 0.02% sodium azide and 50% glycerol.        |
| Storage               | Store at +4Λ C short term. Store at -20Λ C long term. Avoid freeze / thaw cycle.                          |

## Application Details

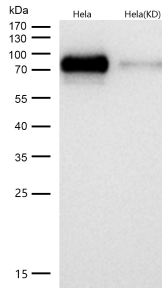
WB: 1:500~1:2000

## Images



Western blot analysis of Phospho-Raf1 (S621) expression in (1) HeLa cell lysate treated with LP; (2) HeLa cell lysate.

All lanes use the Antibody at 1:1K dilution for 1 hour at room temperature.



## Product Description

Activated ERKs are pleiotropic effectors of cell physiology and play an important role in the control of gene expression involved in the cell division cycle, apoptosis, cell differentiation and cell migration.

Note: This product is for in vitro research use only