

## B Raf (Phospho-Thr401) Rabbit mAb

Catalog No: #14231

Package Size: #14231-1 50ul #14231-2 100ul

Orders: order@signalwayantibody.com

Support: tech@signalwayantibody.com

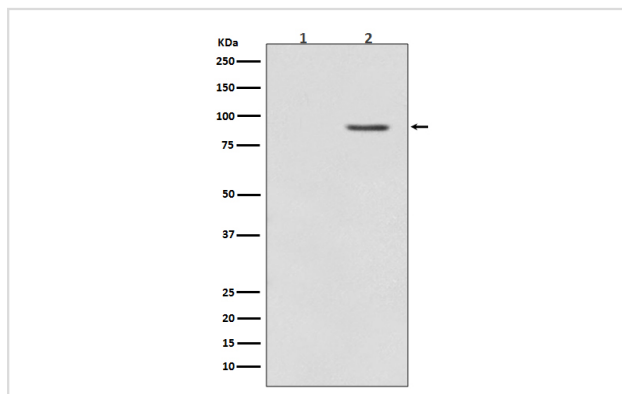
## Description

Product Name	B Raf (Phospho-Thr401) Rabbit mAb
Host Species	Rabbit
Clonality	Monoclonal
Isotype	Rabbit IgG
Purification	Affinity-chromatography
Applications	WB ICC/IF IP
Species Reactivity	Human Mouse Rat
Specificity	Phospho-B Raf (T401) Antibody detects endogenous levels of total Phospho-B Raf (T401)
Immunogen Description	A synthesized peptide derived from human Phospho-B Raf (T401)
Other Names	B-RAF; B-RAF proto-oncogene serine/threonine-protein kinase; BRAF1; RAFB1; RMIL; RMIL serine/threonine-protein kinase; c-RMIL; kinase B-Raf;
Accession No.	Uniprot:P15056
Uniprot	P15056
Calculated MW	85kDa
Formulation	Rabbit IgG in phosphate buffered saline , pH 7.4, 150mM NaCl, 0.02% sodium azide and 50% glycerol.
Storage	Store at +4 $\Lambda$ C short term. Store at -20 $\Lambda$ C long term. Avoid freeze / thaw cycle.

## Application Details

WB:1:500~1:2000 ICC/IF:1:50~1:200 IP:1:30

## Images



Western blot analysis of Phospho-B Raf (T401) expression in (1) PC-12 cell lysate; (2) PC-12 cell lysate treated with TPA.

## Product Description

Protein kinase involved in the transduction of mitogenic signals from the cell membrane to the nucleus. May play a role in the postsynaptic responses of hippocampal neuron. Phosphorylates MAP2K1, and thereby contributes to the MAP kinase signal transduction pathway.

---

Note: This product is for in vitro research use only