

beta Catenin (Phospho-Ser33/Ser37) Rabbit mAb

Catalog No: #14233

Package Size: #14233-1 50ul #14233-2 100ul

Orders: order@signalwayantibody.com

Support: tech@signalwayantibody.com

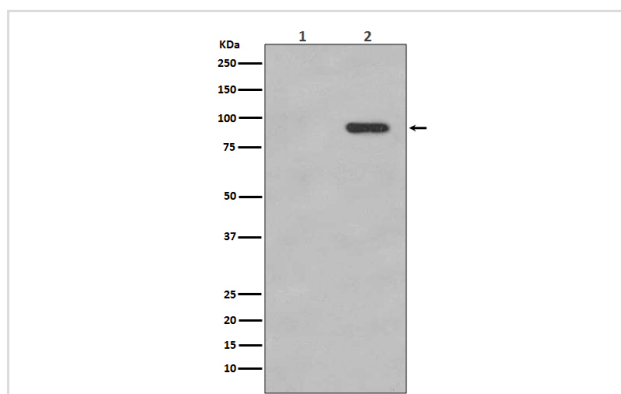
Description

Product Name	beta Catenin (Phospho-Ser33/Ser37) Rabbit mAb
Host Species	Rabbit
Clonality	Monoclonal
Isotype	Rabbit IgG
Purification	Affinity-chromatography
Applications	WB
Species Reactivity	Human Rat
Specificity	Phospho-beta Catenin (S33/S37) Antibody detects endogenous levels of total Phospho-beta Catenin (S33/S37)
Immunogen Description	A synthesized peptide derived from human Phospho-beta Catenin (S33/S37)
Other Names	CATNB; CTNB1; CTNNB; catenin beta; beta catenin;
Accession No.	Uniprot:P35222
Uniprot	P35222
Calculated MW	92kDa
Formulation	Rabbit IgG in phosphate buffered saline , pH 7.4, 150mM NaCl, 0.02% sodium azide and 50% glycerol.
Storage	Store at +4 Λ C short term. Store at -20 Λ C long term. Avoid freeze / thaw cycle.

Application Details

WB:1:500-1000

Images



Western blot analysis of Phospho-beta Catenin (S33/S37) expression in (1) 293T cell lysate; (2) 293T cell lysate treated with calyculin A.

Product Description

Beta-catenin is an adherens junction protein. Adherens junctions (AJs; also called the zonula adherens) are critical for the establishment and maintenance of epithelial layers, such as those lining organ surfaces. AJs mediate adhesion between cells, communicate a signal that neighboring cells are present, and anchor the actin cytoskeleton. In serving these roles, AJs regulate normal cell growth and behavior.

Note: This product is for in vitro research use only