

## STAT3 (Phospho-Tyr705) Rabbit mAb

Catalog No: #14235

Package Size: #14235-1 50ul #14235-2 100ul

Orders: order@signalwayantibody.com

Support: tech@signalwayantibody.com

## Description

Product Name	STAT3 (Phospho-Tyr705) Rabbit mAb
Host Species	Rabbit
Clonality	Monoclonal
Isotype	Rabbit IgG
Purification	Affinity-chromatography
Applications	WB IHC ICC/IF IP
Species Reactivity	Human Mouse Rat
Specificity	Phospho-STAT3 (Y705) Antibody detects endogenous levels of total Phospho-STAT3 (Y705)
Immunogen Description	A synthesized peptide derived from human STAT3
Other Names	APRF; Stat3; HIES; Acute-phase response factor;
Accession No.	Uniprot:P40763
Uniprot	P40763
Calculated MW	88kDa
Formulation	Rabbit IgG in phosphate buffered saline , pH 7.4, 150mM NaCl, 0.02% sodium azide and 50% glycerol.
Storage	Store at +4 $\Lambda$ C short term. Store at -20 $\Lambda$ C long term. Avoid freeze / thaw cycle.

## Application Details

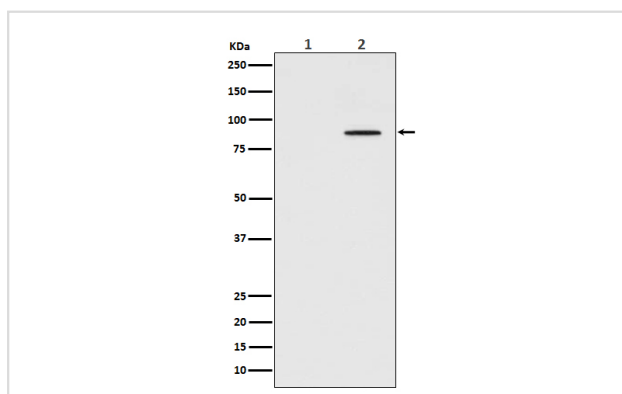
WB: 1:5000~1:10000

IHC: 1:50~1:100

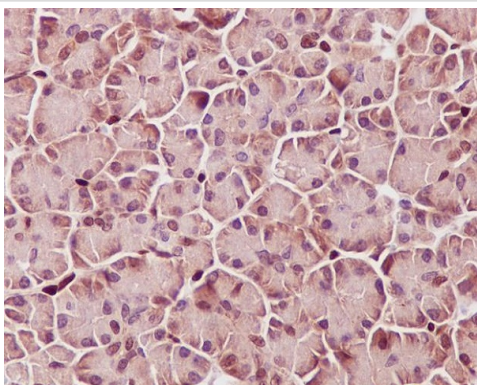
ICC/IF: 1:50~1:000

IP: 1:30

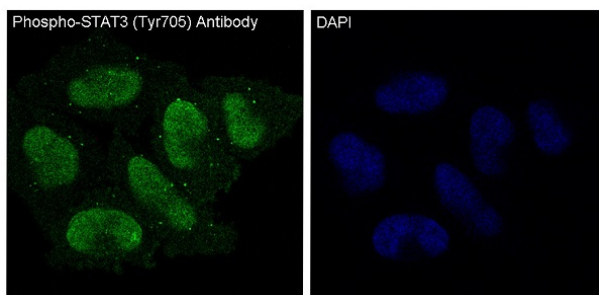
## Images



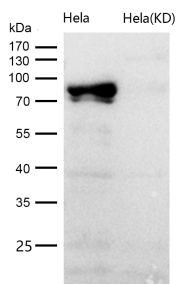
Western blot analysis of Phospho-STAT3 (Tyr705) expression in (1) HeLa cell lysate; (2) HeLa cell lysate treated with IFN- $\alpha$ .



Immunohistochemical analysis of paraffin-embedded human pancreas, using Phospho-STAT3 (Y705) Antibody.



Immunofluorescent analysis of HeLa cells treated with IFN-alpha, using Phospho-STAT3 (Y705) Antibody.



All lanes use the Antibody at 1:5K dilution for 1 hour at room temperature.

## Product Description

The protein encoded by this gene is a member of the STAT protein family. In response to cytokines and growth factors, STAT family members are phosphorylated by the receptor associated kinases, and then form homo- or heterodimers that translocate to the cell nucleus where they act as transcription activators. This protein is activated through phosphorylation in response to various cytokines and growth factors including IFNs, EGF, IL5, IL6, HGF, LIF and BMP2.

Note: This product is for in vitro research use only