

GSK3 β (Phospho-Ser9) Rabbit mAb

Catalog No: #14237

Package Size: #14237-1 50ul #14237-2 100ul

Orders: order@signalwayantibody.com

Support: tech@signalwayantibody.com

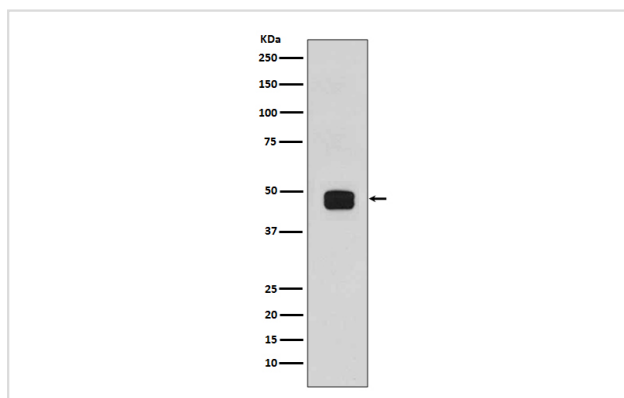
Description

Product Name	GSK3 β (Phospho-Ser9) Rabbit mAb
Host Species	Rabbit
Clonality	Monoclonal
Isotype	Rabbit IgG
Purification	Affinity-chromatography
Applications	WB IHC ICC/IF
Species Reactivity	Human
Specificity	Phospho-GSK3 beta (Ser9) Antibody detects endogenous levels of total Phospho-GSK3 beta (Ser9)
Immunogen Description	A synthesized peptide derived from human Phospho-GSK3 beta (Ser9)
Other Names	glycogen synthase kinase 3 beta; GSK-3 beta; GSK3B; GSK3beta isoform;
Accession No.	Uniprot:P49841
Uniprot	P49841
Calculated MW	46kDa
Formulation	Rabbit IgG in phosphate buffered saline , pH 7.4, 150mM NaCl, 0.02% sodium azide and 50% glycerol.
Storage	Store at +4 Λ C short term. Store at -20 Λ C long term. Avoid freeze / thaw cycle.

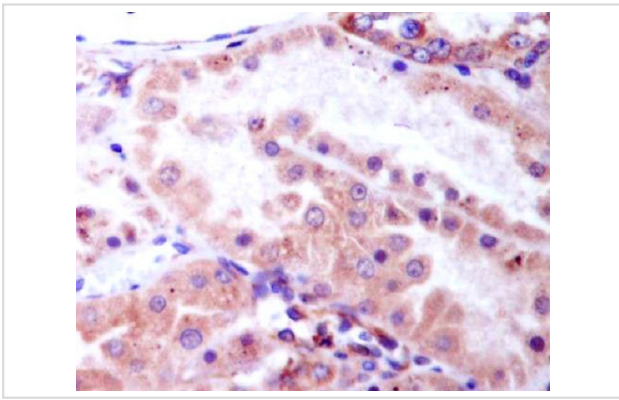
Application Details

WB:1:5000~1:10000IHC:1:50~1:200ICC/IF:1:50~1:200

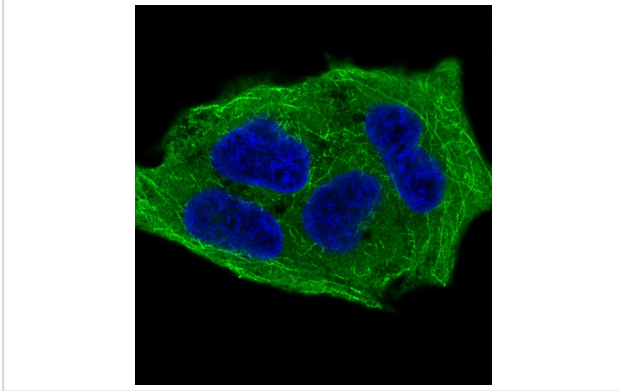
Images



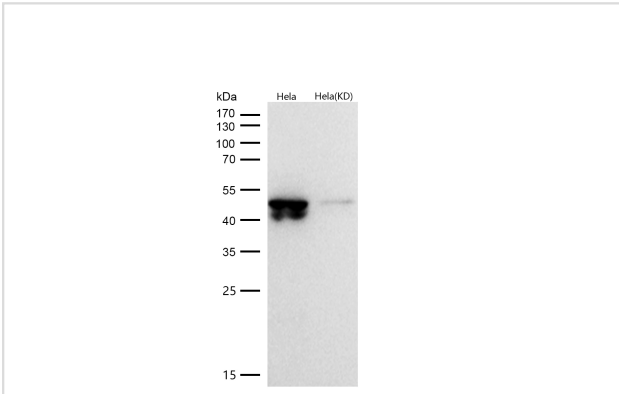
Western blot analysis of GSK3 beta (phospho S9) expression in 293T cell lysates, treated with Calyculin A.



Immunohistochemical analysis of paraffin-embedded human kidney, using Phospho-GSK3 beta (Ser9) Antibody.



Immunofluorescent analysis of HeLa cells treated with Calyculin A, using Phospho-GSK3 beta (Ser9) Antibody.



All lanes use the Antibody at 1:5K dilution for 1 hour at room temperature.

Product Description

GSK3B a proline-directed protein kinase of the GSK family. Phosphorylates and inactivates glycogen synthase. Participates in the Wnt signaling pathway. Involved in energy metabolism, neuronal cell development, and body pattern formation.

Note: This product is for in vitro research use only