

## mTOR (Phospho-Ser2448) Rabbit mAb

Catalog No: #14240

Package Size: #14240-1 50ul #14240-2 100ul

Orders: [order@signalwayantibody.com](mailto:order@signalwayantibody.com)Support: [tech@signalwayantibody.com](mailto:tech@signalwayantibody.com)

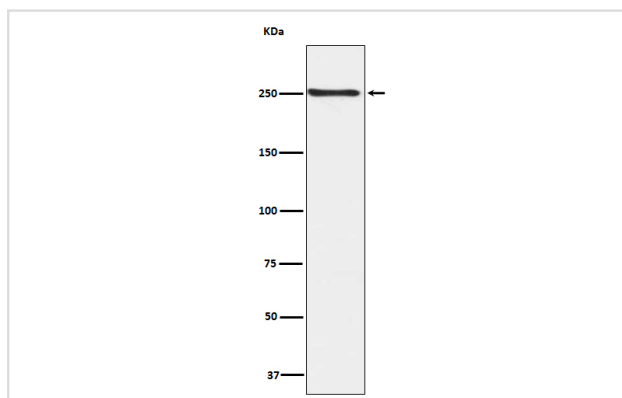
## Description

Product Name	mTOR (Phospho-Ser2448) Rabbit mAb
Host Species	Rabbit
Clonality	Monoclonal
Isotype	Rabbit IgG
Purification	Affinity-chromatography
Applications	WB IHC
Species Reactivity	Human Mouse Rat Pig
Specificity	Phospho-mTOR (S2448) Antibody detects endogenous levels of total Phospho-mTOR (S2448)
Immunogen Description	A synthesized peptide derived from human Phospho-mTOR (S2448)
Other Names	FRAP; FRAP1; FRAP2; RAFT1; Rapamycin target protein; kinase mTOR;
Accession No.	Uniprot:P42345
Uniprot	P42345
Calculated MW	289kDa
Formulation	Rabbit IgG in phosphate buffered saline , pH 7.4, 150mM NaCl, 0.02% sodium azide and 50% glycerol.
Storage	Store at +4 $\Lambda$ C short term. Store at -20 $\Lambda$ C long term. Avoid freeze / thaw cycle.

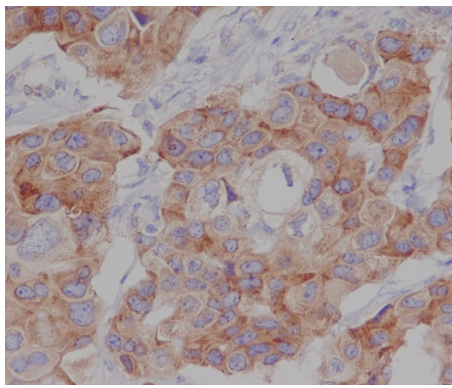
## Application Details

WB:1:500~1:1000IHC:1:50~1:100

## Images



Western blot analysis of Phospho-mTOR (S2448) expression in HEK293 cell lysate.



Immunohistochemical analysis of paraffin-embedded human breast cancer, using Phospho-mTOR (S2448) Antibody.

## Product Description

An atypical kinase belonging to the PIKK family of kinases. Controls cell growth through protein synthesis regulation. Downstream of PI3K/Akt pathway and required for cell survival. Acts as the target for the cell-cycle arrest and immunosuppressive effects of the FKBP12-rapamycin complex.

Note: This product is for in vitro research use only