

## Nrf2 (Phospho-Ser40) Rabbit mAb

Catalog No: #14242

Package Size: #14242-1 50ul #14242-2 100ul

Orders: order@signalwayantibody.com

Support: tech@signalwayantibody.com

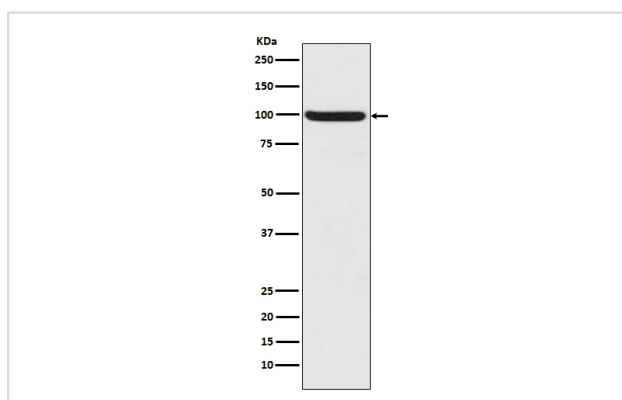
## Description

Product Name	Nrf2 (Phospho-Ser40) Rabbit mAb
Host Species	Rabbit
Clonality	Monoclonal
Isotype	Rabbit IgG
Purification	Affinity-chromatography
Applications	WB IHC ICC/IF IP FC
Species Reactivity	Human
Specificity	Phospho-Nrf2 (S40) Antibody detects endogenous levels of total Phospho-Nrf2 (S40)
Immunogen Description	A synthesized peptide derived from human Phospho-Nrf2 (S40)
Other Names	E4TF1-60; E4TF1A; NFT2; NRF2; NRF2A;
Accession No.	Uniprot:Q16236
Uniprot	Q16236
Calculated MW	90kDa
Formulation	Rabbit IgG in phosphate buffered saline , pH 7.4, 150mM NaCl, 0.02% sodium azide and 50% glycerol.
Storage	Store at +4 $\Lambda$ C short term. Store at -20 $\Lambda$ C long term. Avoid freeze / thaw cycle.

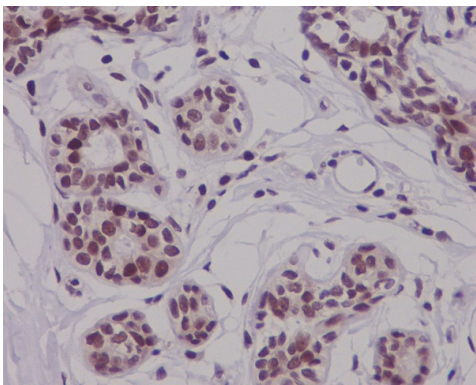
## Application Details

WB:1:1000~1:2000IHC:1:50~1:200ICC/IF:1:50~1:200IP:1:50FC:1:50

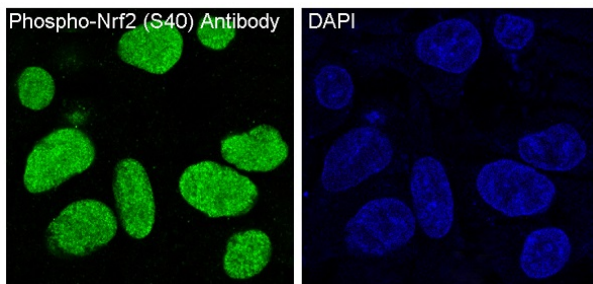
## Images



Western blot analysis of Nrf2 phosphorylation expression in HepG2 cell lysate.



Immunohistochemical analysis of paraffin-embedded human breast carcinoma, using Phospho-Nrf2 (S40) Antibody.



Immunofluorescent analysis of HepG2 cells, using Phospho-Nrf2 (S40) Antibody.

## Product Description

Transcription activator that binds to antioxidant response (ARE) elements in the promoter regions of target genes. Important for the coordinated up-regulation of genes in response to oxidative stress. May be involved in the transcriptional activation of genes of the beta-globin cluster by mediating enhancer activity of hypersensitive site 2 of the beta-globin locus control region.

Note: This product is for in vitro research use only