

Lyn (Phospho-Tyr396) Rabbit mAb

Catalog No: #14243

Package Size: #14243-1 50ul #14243-2 100ul

Orders: order@signalwayantibody.com

Support: tech@signalwayantibody.com

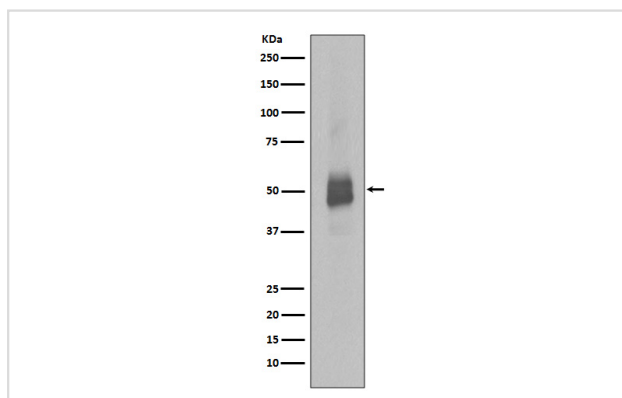
Description

Product Name	Lyn (Phospho-Tyr396) Rabbit mAb
Host Species	Rabbit
Clonality	Monoclonal
Isotype	Rabbit IgG
Purification	Affinity-chromatography
Applications	WB ICC/IF FC
Species Reactivity	Human Mouse
Specificity	Phospho-Lyn (Y396) Antibody detects endogenous levels of total Phospho-Lyn (Y396)
Immunogen Description	A synthesized peptide derived from human Phospho-Lyn (Y396)
Other Names	JTK8; LYN; Tyrosine-protein kinase Lyn;
Accession No.	Uniprot:P07948
Uniprot	P07948
Calculated MW	56kDa
Formulation	Rabbit IgG in phosphate buffered saline , pH 7.4, 150mM NaCl, 0.02% sodium azide and 50% glycerol.
Storage	Store at +4Λ C short term. Store at -20Λ C long term. Avoid freeze / thaw cycle.

Application Details

WB:1:1000~1:2000ICC/IF:1:50~1:200FC:1:50

Images



Western blot analysis of Lyn phosphorylation expression in Jurkat cell lysate treated with Pervanadate.

Product Description

Lyn a tyrosine kinase of the Src family that plays a role in B cell antigen-receptor signaling.

Note: This product is for in vitro research use only