

## c-Jun (Phospho-Ser63) Rabbit mAb

Catalog No: #14245

Package Size: #14245-1 50ul #14245-2 100ul

Orders: order@signalwayantibody.com

Support: tech@signalwayantibody.com

## Description

Product Name	c-Jun (Phospho-Ser63) Rabbit mAb
Host Species	Rabbit
Clonality	Monoclonal
Isotype	Rabbit IgG
Purification	Affinity-chromatography
Applications	WB IHC ICC/IF
Species Reactivity	Human Mouse Rat
Specificity	Phospho-c-Jun (S63) Antibody detects endogenous levels of total Phospho-c-Jun (S63)
Immunogen Description	A synthesized peptide derived from human Phospho-c-Jun (S63)
Other Names	AH119; AP1; Activator protein 1; Jun A; c-Jun;
Accession No.	Uniprot:P05412
Uniprot	P05412
Calculated MW	48kDa
Formulation	Rabbit IgG in phosphate buffered saline , pH 7.4, 150mM NaCl, 0.02% sodium azide and 50% glycerol.
Storage	Store at +4°C short term. Store at -20°C long term. Avoid freeze / thaw cycle.

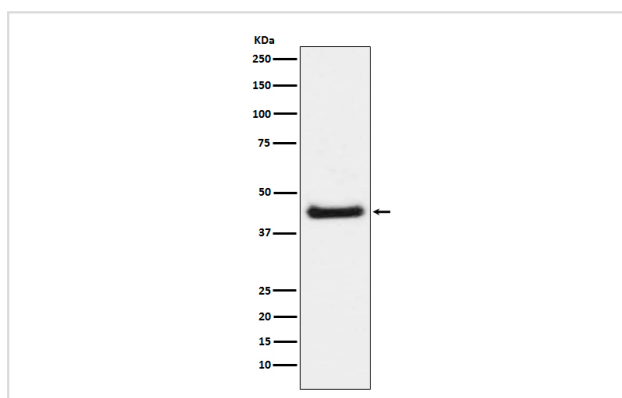
## Application Details

WB: 1:500~1:2000

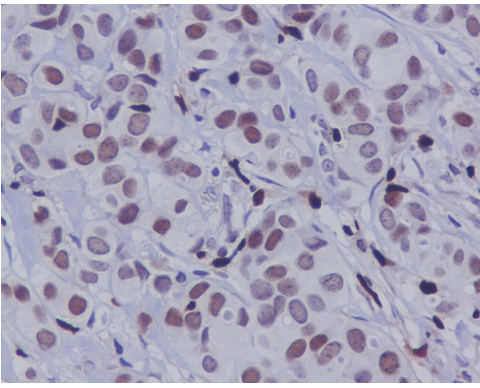
IHC: 1:50~1:200

ICC/IF: 1:50~1:200

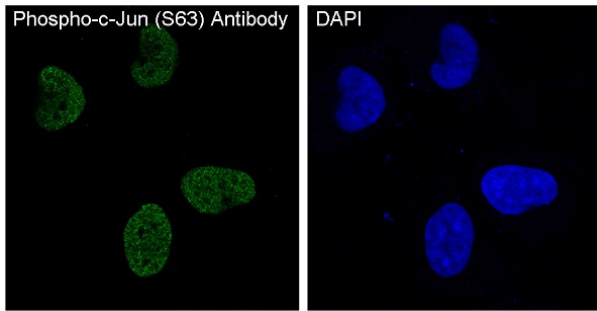
## Images



Western blot analysis of c-Jun phosphorylation expression in NIH/3T3 cell lysate treated with Anisomycin.



Immunohistochemical analysis of paraffin-embedded human breast carcinoma, using Phospho-c-Jun (S63) Antibody.



Immunofluorescent analysis of HeLa cells treated with anisomycin, using Phospho-c-Jun (S63) Antibody.

## Product Description

Transcription factor that recognizes and binds to the enhancer heptamer motif 5'-TGA[CG]TCA-3'. Promotes activity of NR5A1 when phosphorylated by HIPK3 leading to increased steroidogenic gene expression upon cAMP signaling pathway stimulation.

Note: This product is for in vitro research use only