

## PKC alpha (Phospho-Thr638) Rabbit mAb

Catalog No: #14246

Package Size: #14246-1 50ul #14246-2 100ul

Orders: order@signalwayantibody.com

Support: tech@signalwayantibody.com

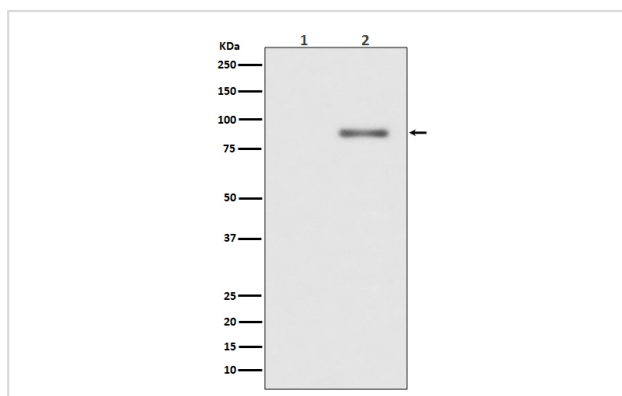
## Description

Product Name	PKC alpha (Phospho-Thr638) Rabbit mAb
Host Species	Rabbit
Clonality	Monoclonal
Isotype	Rabbit IgG
Purification	Affinity-chromatography
Applications	WB IHC ICC/IF IP
Species Reactivity	Human Mouse Rat
Specificity	Phospho-PKC alpha (T638) Antibody detects endogenous levels of total Phospho-PKC alpha (T638)
Immunogen Description	A synthesized peptide derived from human Phospho-PKC alpha (T638)
Other Names	EC 2.7.11.13; KPCA; PKC III; PKC-A; PKC-III; PKC-alpha; PRKACA; PRKCA; Protein kinase C; alpha type; kinase PKC-alpha;
Accession No.	Uniprot:P17252
Uniprot	P17252
Calculated MW	80kDa
Formulation	Rabbit IgG in phosphate buffered saline , pH 7.4, 150mM NaCl, 0.02% sodium azide and 50% glycerol.
Storage	Store at +4 $\Lambda$ C short term. Store at -20 $\Lambda$ C long term. Avoid freeze / thaw cycle.

## Application Details

WB:1:1000~1:5000IHC:1:50~1:200ICC/IF:1:50~1:200IP:1:50

## Images



Western blot analysis of Phospho-PKC alpha (T638) expression in (1) Jurkat cell lysate treated with TPA; (2) Jurkat cell lysate.

## Product Description

PKC alpha is an AGC kinase of the PKC family. A classical PKC downstream of many mitogenic and receptors. Classical PKCs are calcium-dependent enzymes that are activated by phosphatidylserine, diacylglycerol and phorbol esters.

---

Note: This product is for in vitro research use only