

POLR2A (Phospho-Ser2) Rabbit mAb

Catalog No: #14248

Package Size: #14248-1 50ul #14248-2 100ul

Orders: order@signalwayantibody.com

Support: tech@signalwayantibody.com

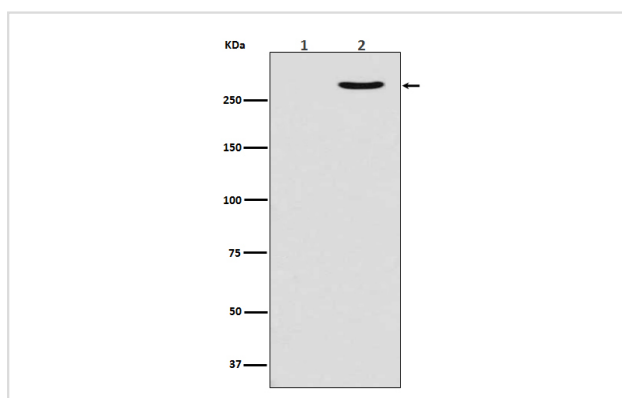
Description

Product Name	POLR2A (Phospho-Ser2) Rabbit mAb
Host Species	Rabbit
Clonality	Monoclonal
Isotype	Rabbit IgG
Purification	Affinity-chromatography
Applications	WB IHC ICC/IF IP FC
Species Reactivity	Human Mouse Rat
Specificity	Phospho-POLR2A (S2) Antibody detects endogenous levels of total Phospho-POLR2A (S2)
Immunogen Description	A synthesized peptide derived from human POLR2A
Other Names	POLR2A; POLR2; RNA polymerase II CTD repeat YSPTSPS;
Accession No.	Uniprot:P24928
Uniprot	P24928
Calculated MW	270kDa
Formulation	Rabbit IgG in phosphate buffered saline , pH 7.4, 150mM NaCl, 0.02% sodium azide and 50% glycerol.
Storage	Store at +4 Λ C short term. Store at -20 Λ C long term. Avoid freeze / thaw cycle.

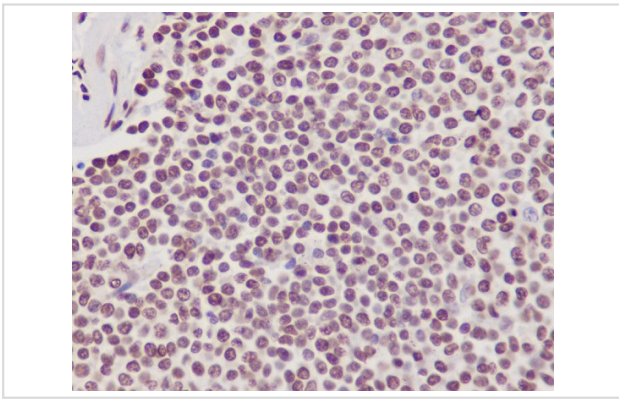
Application Details

WB:1:500~1:2000IHC:1:50~1:200ICC/IF:1:50~1:200IP:1:50FC:1:50

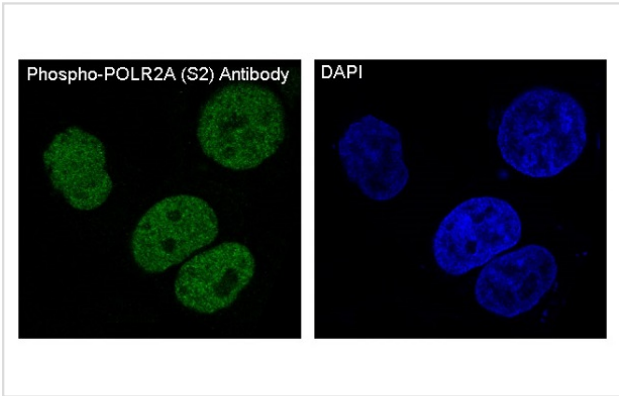
Images



Western blot analysis of Phospho-POLR2A (S2) expression in (1) MCF7 cell lysate treated with Lambda Phosphatase; (2) MCF7 cell lysate.



Immunohistochemical analysis of paraffin-embedded human spleen, using Phospho-POLR2A (S2) Antibody.



Immunofluorescent analysis of MCF7 cells, using Phospho-POLR2A (S2) Antibody .

Product Description

During transcription elongation, Pol II moves on the template as the transcript elongates. Elongation is influenced by the phosphorylation status of the C-terminal domain (CTD) of Pol II largest subunit (RPB1), which serves as a platform for assembly of factors that regulate transcription initiation, elongation, termination and mRNA processing.

Note: This product is for in vitro research use only