

POLR2A (Phospho-Ser5) Rabbit mAb

Catalog No: #14249

Package Size: #14249-1 50ul #14249-2 100ul

Orders: order@signalwayantibody.com

Support: tech@signalwayantibody.com

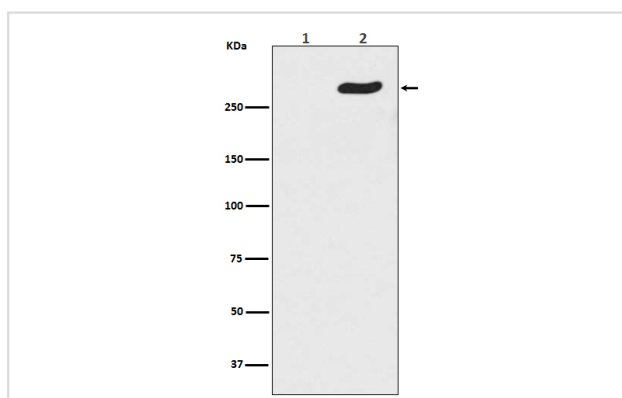
Description

Product Name	POLR2A (Phospho-Ser5) Rabbit mAb
Host Species	Rabbit
Clonality	Monoclonal
Isotype	Rabbit IgG
Purification	Affinity-chromatography
Applications	WB IHC ICC/IF IP FC
Species Reactivity	Human Mouse Rat
Specificity	Phospho-POLR2A (S5) Antibody detects endogenous levels of total Phospho-POLR2A (S5)
Immunogen Description	A synthesized peptide derived from human POLR2A
Other Names	POLR2A; POLR2; RNA polymerase II CTD repeat YSPTSPS;
Accession No.	Uniprot:P24928
Uniprot	P24928
Calculated MW	270kDa
Formulation	Rabbit IgG in phosphate buffered saline , pH 7.4, 150mM NaCl, 0.02% sodium azide and 50% glycerol.
Storage	Store at +4 Λ C short term. Store at -20 Λ C long term. Avoid freeze / thaw cycle.

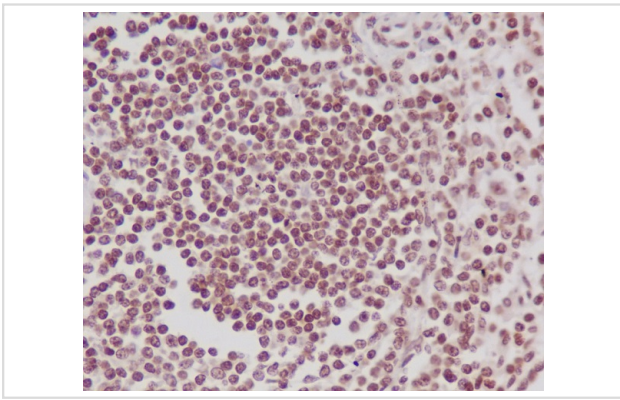
Application Details

WB:1:500~1:2000IHC:1:50~1:200ICC/IF:1:50~1:200IP:1:20FC:1:40

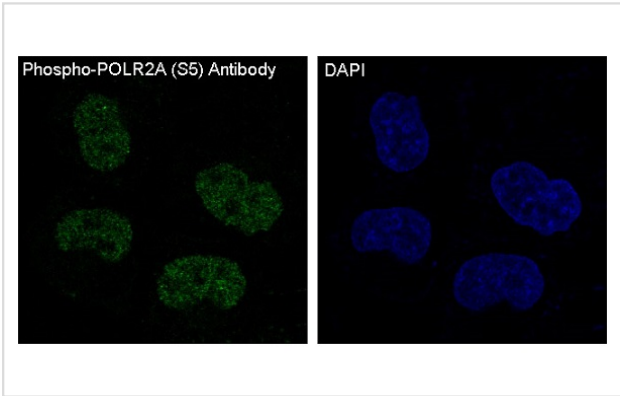
Images



Western blot analysis of Phospho-POLR2A (S5) expression in (1) HeLa cell lysate treated with Lambda Phosphatase; (2) HeLa cell lysate.



Immunohistochemical analysis of paraffin-embedded human spleen, using Phospho-POLR2A (S5) Antibody.



Immunofluorescent analysis of HeLa cells, using Phospho-POLR2A (S5) Antibody .

Product Description

Acts as an RNA-dependent RNA polymerase when associated with small delta antigen of Hepatitis delta virus, acting both as a replicate and transcriptase for the viral RNA circular genome.

Note: This product is for in vitro research use only