

## Met (c-Met) (Phospho-Tyr1349) Rabbit mAb

Catalog No: #14257

Package Size: #14257-1 50ul #14257-2 100ul

Orders: order@signalwayantibody.com

Support: tech@signalwayantibody.com

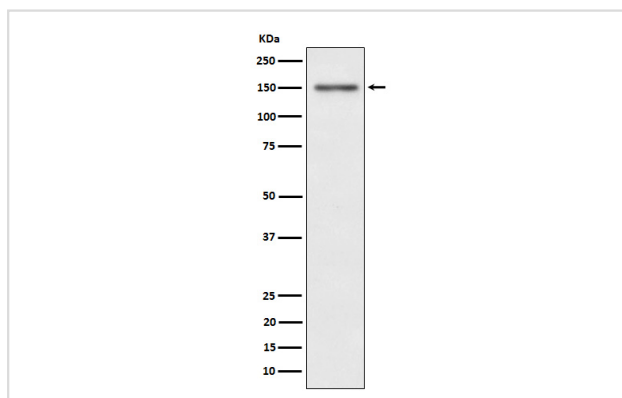
## Description

Product Name	Met (c-Met) (Phospho-Tyr1349) Rabbit mAb
Host Species	Rabbit
Clonality	Monoclonal
Isotype	Rabbit IgG
Purification	Affinity-chromatography
Applications	WB IHC IP
Species Reactivity	Human
Specificity	Phospho-Met (c-Met) (Y1349) Antibody detects endogenous levels of total Phospho-Met (c-Met) (Y1349)
Immunogen Description	A synthesized peptide derived from human c-Met
Other Names	AUTS9; D249; HGF; HGF receptor; HGFR; MET; Par4; RCCP2;
Accession No.	Uniprot:P08581
Uniprot	P08581
Calculated MW	156kDa
Formulation	Rabbit IgG in phosphate buffered saline , pH 7.4, 150mM NaCl, 0.02% sodium azide and 50% glycerol.
Storage	Store at +4Λ C short term. Store at -20Λ C long term. Avoid freeze / thaw cycle.

## Application Details

WB:1:500~1:2000IHC:1:50~1:200IP:1:50

## Images



Western blot analysis of Phospho-Met (c-Met) (Y1349) expression in HeLa cell lysate.

## Product Description

Receptor for hepatocyte growth factor and scatter factor. Has a tyrosine-protein kinase activity. Functions in cell proliferation, scattering, morphogenesis and survival.

---

Note: This product is for in vitro research use only