

## IKB alpha (Phospho-Ser36) Rabbit mAb

Catalog No: #14260

Package Size: #14260-1 50ul #14260-2 100ul

Orders: order@signalwayantibody.com

Support: tech@signalwayantibody.com

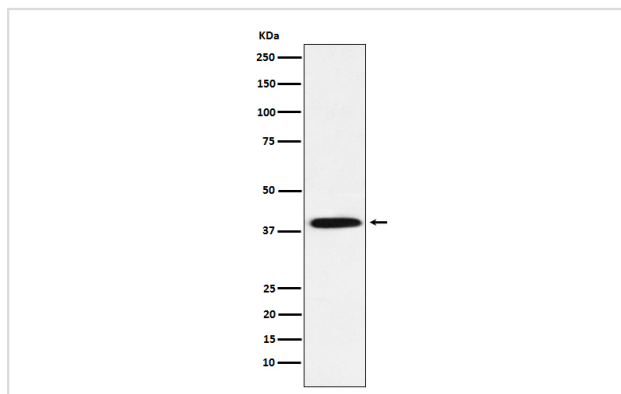
## Description

Product Name	IKB alpha (Phospho-Ser36) Rabbit mAb
Host Species	Rabbit
Clonality	Monoclonal
Isotype	Rabbit IgG
Purification	Affinity-chromatography
Applications	WB FC
Species Reactivity	Human Mouse
Specificity	Phospho-IKB alpha (S36) Antibody detects endogenous levels of total Phospho-IKB alpha (S36)
Immunogen Description	A synthesized peptide derived from human Phospho-IKB alpha (S36)
Other Names	I kappa B alpha; IkappaBalpha; IKB-alpha; IKBA; IKBalpha; MAD3; NF kappa B inhibitor alpha; NFKBI; NFKBIA;
Accession No.	Uniprot:P25963
Uniprot	P25963
Calculated MW	39kDa
Formulation	Rabbit IgG in phosphate buffered saline , pH 7.4, 150mM NaCl, 0.02% sodium azide and 50% glycerol.
Storage	Store at +4Λ C short term. Store at -20Λ C long term. Avoid freeze / thaw cycle.

## Application Details

WB:1:500~1:2000FC:1:50

## Images



Western blot analysis of Phospho-IKB alpha (S36) expression in HeLa cell lysate treated with Calyculin A.

## Product Description

Inhibits the activity of dimeric NF-kappa-B/REL complexes by trapping REL dimers in the cytoplasm through masking of their nuclear localization signals. On cellular stimulation by immune and proinflammatory responses, becomes phosphorylated promoting ubiquitination and degradation, enabling the dimeric RELA to translocate to the nucleus and activate transcription.

---

Note: This product is for in vitro research use only