

PDHA1 (Phospho-Ser293) Rabbit mAb

Catalog No: #14261

Package Size: #14261-1 50ul #14261-2 100ul

Orders: order@signalwayantibody.com

Support: tech@signalwayantibody.com

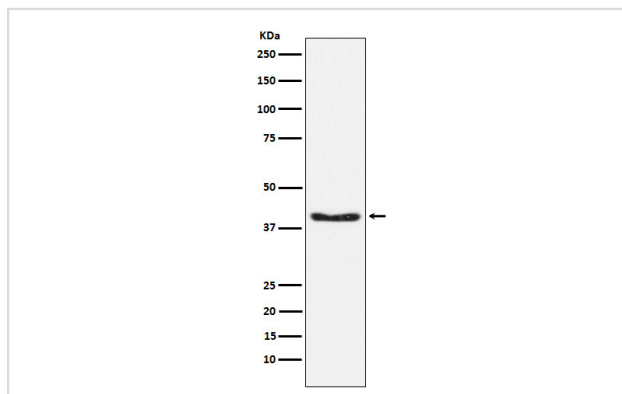
Description

Product Name	PDHA1 (Phospho-Ser293) Rabbit mAb
Host Species	Rabbit
Clonality	Monoclonal
Isotype	Rabbit IgG
Purification	Affinity-chromatography
Applications	WB IHC IP
Species Reactivity	Human Mouse Rat
Specificity	Phospho-PDHA1 (S293) Antibody detects endogenous levels of total Phospho-PDHA1 (S293)
Immunogen Description	A synthesized peptide derived from human Phospho-PDHA1 (S293)
Other Names	PDH; PDHA; PDHA1; PDHCE1A; PHE1A; Pyruvate Dehydrogenase (lipoamide) alpha 1; Pyruvate Dehydrogenase E1 alpha;
Accession No.	Uniprot:P08559
Uniprot	P08559
Calculated MW	40kDa
Formulation	Rabbit IgG in phosphate buffered saline , pH 7.4, 150mM NaCl, 0.02% sodium azide and 50% glycerol.
Storage	Store at +4 Λ C short term. Store at -20 Λ C long term. Avoid freeze / thaw cycle.

Application Details

WB:1:500~1:2000IHC:1:50~1:200IP:1:50

Images



Western blot analysis of Phospho-PDHA1 (S293) expression in 293T cell lysate.

Product Description

The pyruvate dehydrogenase complex catalyzes the overall conversion of pyruvate to acetyl-CoA and CO₂. It contains multiple copies of three enzymatic components: pyruvate dehydrogenase (E1), dihydrolipoamide acetyltransferase (E2) and lipoamide dehydrogenase (E3).

Note: This product is for in vitro research use only