

## Chk2 (Phospho-Thr68) Rabbit mAb

Catalog No: #14265

Package Size: #14265-1 50ul #14265-2 100ul

Orders: order@signalwayantibody.com

Support: tech@signalwayantibody.com

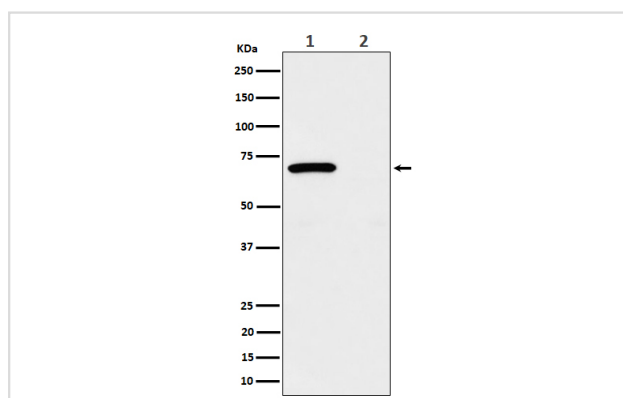
## Description

Product Name	Chk2 (Phospho-Thr68) Rabbit mAb
Host Species	Rabbit
Clonality	Monoclonal
Isotype	Rabbit IgG
Purification	Affinity-chromatography
Applications	WB IP
Species Reactivity	Human
Specificity	Phospho-Chk2 (T68) Antibody detects endogenous levels of total Phospho-Chk2 (T68)
Immunogen Description	A synthesized peptide derived from human Phospho-Chk2 (T68)
Other Names	CHEK2; CHK2; Cds1; Chk2; EC 2.7.11.1; RAD53; kinase Chk2;
Accession No.	Uniprot:O96017
Uniprot	O96017
Calculated MW	65kDa
Formulation	Rabbit IgG in phosphate buffered saline , pH 7.4, 150mM NaCl, 0.02% sodium azide and 50% glycerol.
Storage	Store at +4 $\Lambda$ C short term. Store at -20 $\Lambda$ C long term. Avoid freeze / thaw cycle.

## Application Details

WB:1:500~1:2000IP:1:50

## Images



Western blot analysis of Phospho-Chk2 (T68) expression in (1) 293 treated with UV and Untreated cell lysate; (2) Untreated.

## Product Description

These are known to be preferred sites for phosphorylation by ATM/ATR kinases. After DNA damage by ionizing radiation (IR), UV irradiation, or hydroxyurea treatment, Thr68 and other sites in this region become phosphorylated by ATM/ATR. The SQ/TQ cluster domain, therefore, seems to have a regulatory function.

---

Note: This product is for in vitro research use only