

## Rad17(Phospho-Ser656) Rabbit mAb

Catalog No: #14271

Package Size: #14271-1 50ul #14271-2 100ul

Orders: order@signalwayantibody.com

Support: tech@signalwayantibody.com

## Description

Product Name	Rad17(Phospho-Ser656) Rabbit mAb
Host Species	Rabbit
Clonality	Monoclonal
Isotype	Rabbit IgG
Purification	Affinity-chromatography
Applications	WB IHC ICC/IF
Species Reactivity	Human
Specificity	Phospho-Rad17 (S656) Antibody detects endogenous levels of total Phospho-Rad17 (S656)
Immunogen Description	A synthesized peptide derived from human Phospho-Rad17 (S656)
Other Names	CCYC; hRad17; R24L; RAD17; Rad24;
Accession No.	Uniprot:O75943
Uniprot	O75943
Calculated MW	85kDa
Formulation	Rabbit IgG in phosphate buffered saline , pH 7.4, 150mM NaCl, 0.02% sodium azide and 50% glycerol.
Storage	Store at +4 $\Lambda$ C short term. Store at -20 $\Lambda$ C long term. Avoid freeze / thaw cycle.

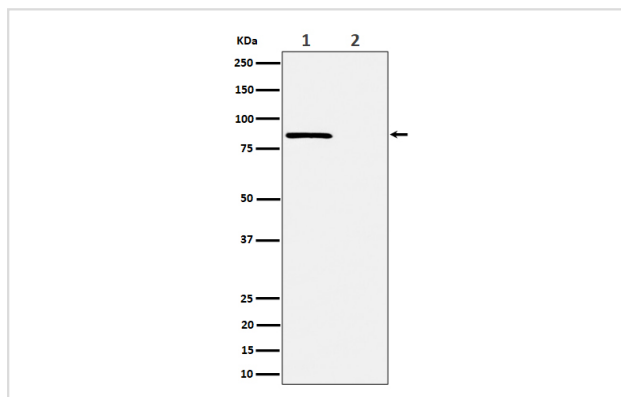
## Application Details

WB: 1:500~1:2000

IHC: 1:50~1:200

ICC/IF: 1:50~1:200

## Images



Western blot analysis of Phospho-Rad17 (S656) expression in (1) HeLa cell treated with CA lysate; (2) HeLa cell lysate.

## Product Description

Essential for sustained cell growth, maintenance of chromosomal stability, and ATR-dependent checkpoint activation upon DNA damage. Has a weak ATPase activity required for binding to chromatin. Participates in the recruitment of the RAD1-RAD9-HUS1 complex onto chromatin, and in CHEK1

activation. May also serve as a sensor of DNA replication progression, and may be involved in homologous recombination.

---

Note: This product is for in vitro research use only