

## CBL(Phospho-Ser669) Rabbit mAb

Catalog No: #14272

Package Size: #14272-1 50ul #14272-2 100ul

Orders: order@signalwayantibody.com

Support: tech@signalwayantibody.com

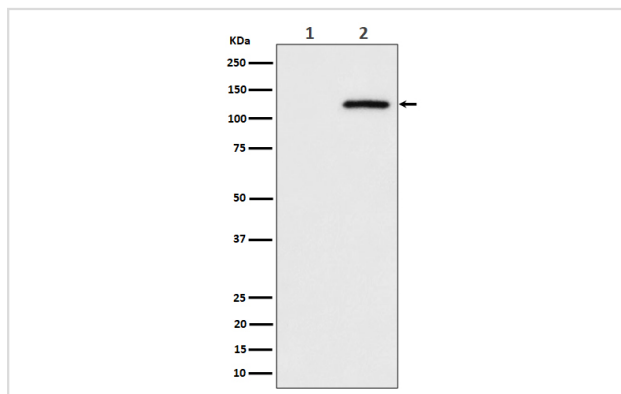
## Description

|                       |   |
|-----------------------|---|
| Product Name          | CBL(Phospho-Ser669) Rabbit mAb  |
| Host Species          | Rabbit  |
| Clonality             | Monoclonal  |
| Isotype               | Rabbit IgG  |
| Purification          | Affinity-chromatography   |
| Applications          | WB  |
| Species Reactivity    | Human Mouse Rat   |
| Specificity           | Phospho-CBL (S669) Antibody detects endogenous levels of total Phospho-CBL (S669)   |
| Immunogen Description | A synthesized peptide derived from human Phospho-CBL (S669)   |
| Other Names           | Casitas B lineage lymphoma proto oncogene; cbl; CBL2; E3 ubiquitin protein ligase CBL; Oncogene CBL2; Proto oncogene c CBL; RING finger protein 55; RNF55; Signal transduction protein CBL; |
| Accession No.         | Uniprot:P22681  |
| Uniprot               | P22681  |
| Calculated MW         | 120kDa  |
| Formulation           | Rabbit IgG in phosphate buffered saline , pH 7.4, 150mM NaCl, 0.02% sodium azide and 50% glycerol.  |
| Storage               | Store at +4 $\Lambda$ C short term. Store at -20 $\Lambda$ C long term. Avoid freeze / thaw cycle.  |

## Application Details

WB:1:500~1:2000

## Images



Western blot analysis of Phospho-CBL (S669) expression in (1) HeLa cell lysate; (2) HeLa cell treated with pervanadate lysate.

## Product Description

Participates in signal transduction in hematopoietic cells. Adapter protein that functions as a negative regulator of many signaling pathways that start from receptors at the cell surface. Acts as an E3 ubiquitin-protein ligase, which accepts ubiquitin from specific E2 ubiquitin-conjugating enzymes, and then transfers it to substrates promoting their degradation by the proteasome.

---

Note: This product is for in vitro research use only