

MCM2 (Phospho-Ser108) Rabbit mAb

Catalog No: #14276

Package Size: #14276-1 50ul #14276-2 100ul

Orders: order@signalwayantibody.com

Support: tech@signalwayantibody.com

Description

Product Name	MCM2 (Phospho-Ser108) Rabbit mAb
Host Species	Rabbit
Clonality	Monoclonal
Isotype	Rabbit IgG
Purification	Affinity-chromatography
Applications	WB ICC/IF IP
Species Reactivity	Human Mouse Rat
Specificity	Phospho-MCM2 (S108) Antibody detects endogenous levels of total Phospho-MCM2 (S108)
Immunogen Description	A synthesized peptide derived from human Phospho-MCM2 (S108)
Other Names	BM28; CCNL1; cdc19; CDCL1 Cyclin like 1; MCM2; Minichromosome maintenance protein 2;
Accession No.	Uniprot:P49736
Uniprot	P49736
Calculated MW	125kDa
Formulation	Rabbit IgG in phosphate buffered saline , pH 7.4, 150mM NaCl, 0.02% sodium azide and 50% glycerol.
Storage	Store at +4Λ C short term. Store at -20Λ C long term. Avoid freeze / thaw cycle.

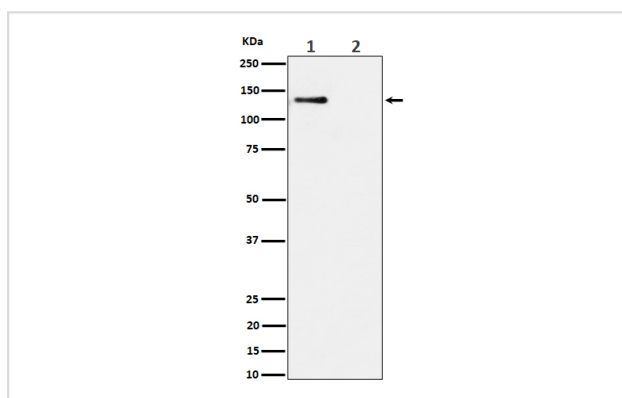
Application Details

WB: 1:500~1:2000

ICC/IF: 1:50~1:200

IP: 1:50

Images



Western blot analysis of Phospho-MCM2 (S108) expression in (1) HeLa cell lysate; (2) HeLa cell treated with alkaline phosphatase lysate.

Product Description

Acts as component of the MCM2-7 complex (MCM complex) which is the putative replicative helicase essential for 'once per cell cycle' DNA replication initiation and elongation in eukaryotic cells.

Note: This product is for in vitro research use only