

TAOK1/2/3 (Phospho-Ser181/Ser181/Ser177) Rabbit mAb

Catalog No: #14277

Orders: order@signalwayantibody.com

Package Size: #14277-1 50ul #14277-2 100ul

Support: tech@signalwayantibody.com

Description

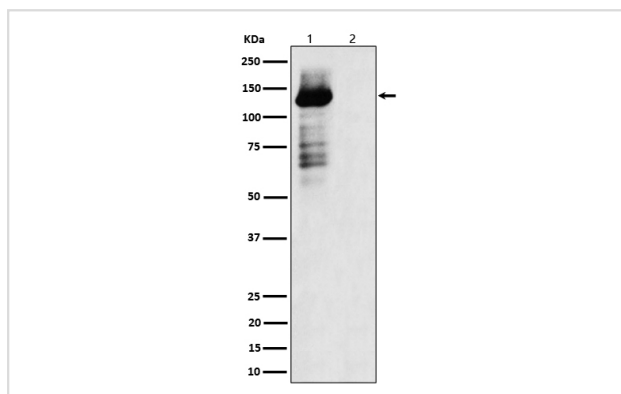
Product Name	TAOK1/2/3 (Phospho-Ser181/Ser181/Ser177) Rabbit mAb
Host Species	Rabbit
Clonality	Monoclonal
Isotype	Rabbit IgG
Purification	Affinity-chromatography
Applications	WB IHC
Species Reactivity	Human Mouse Rat
Specificity	Phospho-TAOK1/2/3 (S181 + S181 + S177) Antibody detects endogenous levels of total Phospho-TAOK1/2/3 (S181 + S181 + S177)
Immunogen Description	A synthesized peptide derived from human Phospho-TAOK1/2/3 (S181 + S181 + S177)
Other Names	TAOK1; TAOK2; TAOK3;
Accession No.	Uniprot:Q7L7X3/Q9UL54/Q9H2K8
Uniprot	Q7L7X3/Q9UL54/Q9H2K8
Calculated MW	140,130,110kDa
Formulation	Rabbit IgG in phosphate buffered saline , pH 7.4, 150mM NaCl, 0.02% sodium azide and 50% glycerol.
Storage	Store at +4Λ C short term. Store at -20Λ C long term. Avoid freeze / thaw cycle.

Application Details

WB: 1:500~1:2000

IHC: 1:50~1:200

Images



Western blot analysis of Phospho-TAOK1/2/3 (S181 + S181 + S177) expression in (1) 293 cell lysate; (2) 293 cell treated with Lambda Phosphatase lysate.

Product Description

Serine/threonine-protein kinase involved in different processes such as membrane blebbing and apoptotic bodies formation DNA damage response

and MAPK14/p38 MAPK stress-activated MAPK cascade. Phosphorylates itself, MBP, activated MAPK8, MAP2K3, MAP2K6 and tubulins. Activates the MAPK14/p38 MAPK signaling pathway through the specific activation and phosphorylation of the upstream MAP2K3 and MAP2K6 kinases.

Note: This product is for in vitro research use only